



# THE EYE CATCHER

Publication of the Massachusetts Lions Eye Research Fund, Inc.

2015 – 2016 Volume 50 No. 1

## PRESIDENT'S MESSAGE

I am humbled and honored to be able to serve as your President of the Massachusetts Lions Eye Research Fund. As I travel around the state visiting clubs and attending the various district Cabinet/Advisory meetings, I continue to be impressed by the work of the Lions in Multiple District 33. It is amazing to see both the number and the diversity of projects that support the MLERF.

As you know, funding cutting-edge basic research is the mission of the MLERF. By the time you read this, it is possible that you may have heard or read about a major breakthrough concerning one of the projects we supported.

For the past 10 years, Dr. Michael Young of the Schepens Research Institute has been studying the use of retinal stem cells to repair damage to the retina. The goal is to graft stem cells to the diseased tissue in the retina. His research is now ready for the clinical trial stage. If successful, researchers will be able to restore vision by growing photoreceptors (rods and cones) in the eye! That is truly awe-inspiring!

While it has taken 10 years, the seed money that we provided to Dr. Young is directly responsible for this latest breakthrough. This type of research would not be possible without the Lions of MD33 and your support of the MLERF.

In early January, I met with Dr. Noorjahan Panjwani from Tufts to receive an update on how they used the \$165,000 Presidential grant that they were awarded last July. The Presidential grant is a special grant which allows an institution to spend money on “brick and mortar” items such as equipment. Tufts used the grant in order to purchase two key pieces of equipment: an HRT3 confocal microscope and a Bio-Plex Multiarray platform. With these two pieces of hardware, they can provide radically improved patient care.

Firstly, the microscope makes it possible to image corneal cells in real time with a non-invasive procedure. The current diagnostic procedure requires culturing cells via a biopsy and having to wait days or weeks for the results. With the new microscope, certain pathogens can be identified on the day of infection!

The Bio-Plex array allows for the detection of nearly 100 biological molecules and markers of corneal inflammation in a single teardrop! Previously, each molecule or marker would have needed to be tested for separately and would have required a much larger sample of biological fluids for testing.

An important note concerning this grant is that half of the money for the grant was provided by matching funds from LCIF. Thanks to the Lions of Massachusetts, vision research is alive and well! You have a right to be proud.

Yours in Lionism,  
Martin Middleton



# Board of Directors

## Corporate Officers/Executive Committee

PCST Martin Middleton	33-S	President
PDG Edward Merrick	33-K	1st Vice President
PDG Roger Jones	33-Y	2nd Vice President
PCST Robert Haskell	33-A	3rd Vice President
PDG Jeanne Farrow	33-N	Secretary
PDG, PP Jim Roth	33-K	Treasurer
PDG Joyce Middleton	33-S	Executive Director
PDG Randall Pinch	33-N	Immediate Past President

### Directors – District Governors

DG Mary Brittain 33-Y  
DG E.J. Sowden 33-A  
DG David Wilson 33-N  
DG William Donnellan 33-K  
DG Roland Grenier 33-S

### Directors - 2016

PCS Christine Waller 33-Y  
PDG Dennis Landry 33-A  
PDG Jane Fanjoy 33-N  
PRC Diana Faust 33-K  
PDG Joyce Middleton 33-S

### Directors - 2018

Maryann Bankman 33-Y  
Jeanne Lillie 33-A  
Marcel Plouffe 33-N  
PZC Gino Angelone 33-K  
PDG Ray Moreau 33-S

### Directors (NV)

2VDG Sharyn Wentworth 33-Y  
2VDG Todd Karkane 33-A  
2VDG Jim Wagner 33-N  
2VDG Margaret Menard 33-K  
2VDG Deb Martin 33-S

### Advisor

PID L Doug Sime, PP Orientation  
PDG Wane Smith, PP Orientation  
PDG Dick Ferrucci, PP Public Relations  
PDG Randy Pinch, PP Public Relations

### Directors – 1st Vice District Governors

1VDG Linda Carr 33-Y  
1VDG Lisa Nelson 33-A  
1VDG Joan Parcewski 33-N  
1VDG Andy Porter 33-K  
1VDG Sharon Audette 33-S

### Directors - 2017

PCST Claudette Placzek 33-Y  
PDG Mark Desmarais 33-A  
Joan Stein-Streilein, PhD 33-N  
PDG Matthew Richardson 33-K  
PDG David Barbour 33-S

### Directors - 2019

Kenneth Larkin 33-Y  
PCST Colleen Onkay 33-A  
Mike Gmitter 33-N  
PDG Pat Kalicki 33-K  
PDG Bev Dillon 33-S

### Eye Catcher Reporters (NV)

PCS Christine Waller 33-Y  
PCST Bob Haskell 33-A  
Joan Stein-Streilein, PhD 33-N  
PDG Doreen Martel 33-K  
PDG Dave Barbour 33-S

**Assistant Treasurer (NV)**  
PCC, PDG William Murphy, PP

PID Chuck Kostro, PP Grants  
PDG Jim Roth, PP Grants  
Dr. Alan Bachrach Grants  
RC Debbie Hayes Eye Catcher

### Parliamentarians

PDG Ted Irvin, PP  
PDG Wayne Smith, PP



# News From the Districts

## District 33Y



**PCS Christine Waller**

17 Breton Lane  
Holyoke, MA 01040  
(H) 413-533-0196  
cwaller@americanrenal.com

As we move closer to the end of the year and the holidays are upon us we enter a special time of the year of thinking about our families and friends. We also end the year with thoughts of making the New Year better for ourselves and the world we live in with setting goals. Some of those goals are easily achievable and others are very lofty goals that will be hard to attain but we will still reach to achieve that goal.

This year the Lions of Multiple District are working hard to raise \$1.1 million dollars, the goal set for Massachusetts Lions Eye Research Fund Inc to further research to prevent and cure eye diseases that cause loss of eye sight. MLERFi President Martin Middleton has a goal set for all of the Lions in 33Y of raising \$85,000.00 for the Massachusetts Lions Eye Research fund. Last year we raised \$88,779.50, so this year we most certainly can reach our goal if everyone pitches in! There were 11 clubs that did not contribute anything to MLERFi last year and the MLERFi is the Massachusetts Multiple District 33 official Lions project. Let's work together to get 100%! If as a club you feel that you can't do it alone, talk to your neighboring Lions Club to see if combining your effects to raise funds for MLERFi would work for the both of you. If you need inspiration, ask any one of your MLERFi Board of Directors to come speak to your club to hear the inspiring stories of how each you make a difference in all of our lives because of your dedication and hard work to raise funds. The research grants are given to some of the brightest and certainly some of the most dedicated researchers in the field of research in eye disorders and diseases. We are funding some cutting edge research for all!

Many clubs in 33Y use canisters to help with

fundraising for MLERFi with pennies for sight. This year our President of MLERFi, Martin Middleton has a "Light Year of Pennies Challenge". He challenges every Lion to collect \$36 for one light hour of pennies and our clubs to collect \$864 for one light day or a one light week of pennies of \$6,048. Can you put out one more canister to reach those club goals?

Did you ask the company you work for if they will match your deduction to help MLERFi fund grants for eye research?

Did you or your club ask your local bank that you do business with for a donation for MLERFi?

Have you heard about President Martin's other fundraiser yet? You can now donate online by shopping at certain sites.

If you are a shopper online go to <https://smile.amazon.com/ch/04-2278062> or go to iGive at [www.iGive.com/MassachusettsLionsEyeResearchFundInc](http://www.iGive.com/MassachusettsLionsEyeResearchFundInc) and choose your items to be purchased and designate MLERFi as your charity of choice. A donation of up to 26% will be sent to MLERFi. It is as simple as that!

Did you know that you can donate directly to MLERFi on the website of <http://mleffi.org>? Well you can.

Many clubs have fundraisers to raise the funds for their donations to help fund MLERFi. Agawam and West Springfield were able to donate in 2014 over \$25,000 from their Big E fundraisers, 33Y Dining for Dollars at the Ninety Nine Restaurants in Springfield, Pittsfield and Greenfield were able to raise over \$550, Springfield 16 acres donated almost \$2,000 with their special fundraisers, Northampton raised over \$8,500 of which over \$1,500 was raised from their February calendar sales, over \$1,000 was raised by the Agawam Lioness Club, Granby raised \$50, and even the small town of Pelham which has no store in that town was able to raise \$100. That is only a small sample of the clubs who



Continued on page 10

# News From the Districts

## District 33A



### Robert D. Haskell

18 Johnson Street  
Leominster, Ma. 01453  
(H) 978-534-2386 ((E-Mail)  
vze25nha@verizon.net

I would like to take this time to thank all of you Lions of District 33-A, and Multiple 33-Y.N.K.S. your families, friends and supporters, for all the hard work and effort we put into fund raising. Since 1952, we as a District have raised over \$3,465,505.47 dollars, and Multiple District 33 in total have raised \$31,042,314.23 dollars for the Eye Research Centers affiliated with many of the Hospital's in Boston, Ma.

It is hard work to collect all those pennies, nickels, dimes, quarters and dollars, there must be other ways for us to be smarter in our fund raising. We have the tools such as the computer with face book, media, radio, newspaper ads, articles in key magazines with success stories, some of which only circulate by word of mouth among ourselves when the world should know.

A good example of this, is what a bucket of cold water can do to raise funds for a cause that also afflicts so many people from around the globe.

If any of the Lions of District 33-A, as well as Multiple Districts 33 – Y.N.K.S. working with their Districts Directors and Club Presidents, ask if they could within those clubs, seek members that are skilled in computing to help us by sharing ideas, and volunteering with their Directors to make our M.L.E.R.F. Inc. get the boost we would like to have to be able to educate, cure, and prevent-



ble eye injuries.

We also need to reach out to other corporations for funding, some do matching funds which also can make a huge difference. I know we can do much more, we have so many talented Lions throughout the State. Speaking of talented Lions, District 33-A is looking for some who would be interested in taking over the position of Eye Catcher Reporter. Please let our District Governor E.J. Sowden, through CST Denise Andrews know that you are interested in the position.

Respectfully Submitted,  
3rd Vice Pres. M.L.E.R.F.  
Bob Haskell

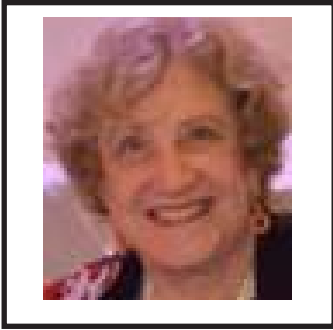


©Hallmark Licensing, Inc.

Maxine.com

# News From the Districts

## District 33N



**Joan Stein-Streilein**

8 Dartmouth St.  
Beverly, MA 01915  
978 927 5915  
jes7@comcast.net

Talk about eyes: mine have been opened this last year as I discovered the creative ways the Lions raise money for eye research in our district. I wish I could mention all the clubs and their events.



Lets start with the **Concord Lions**.... I have to give credit to this seasoned Lions club, they are not growing moss by being stuck with doing only their traditional fund raisers... but keeping up with the times.

In addition to pancakes in 2015, the **Concord lions** said hello to their 2nd annual classic car show.

“**Classic cars delight crowds at Concord show**” was the headline on the October 22 issue of the Concord journal. <http://concord.wickedlocal.com/article/20151021/NEWS/151028864/0/SEARCH>.



Quoting from the Concord journal. “Nancy Crowley and Leslie Luppold of the “Concord Lions Club were pleased with the turnout this year. ‘The more we make the more we give away’, said Crowley. According to Crowley the Club donates to the schools, the police and the Lions’ signature charity eye research.”

**Concord Lions gave a check of 5K to their district governor...Dave (Willy) Wilson for MLERF... on November 10 . Yay!**

### **Around the district:**

Dinning for dollars is a great success for many clubs in the district: The **Methuen Lions** raised 20% of proceeds at Fuddruckers in October.

There was plenty to eat at the **Billerica Lions Club** Breakfast in November. Adults 10\$ and children under 8 free. yummmm, eggs, bacon, home fries, French toast and home fries.

**Newburyport** raised money with their homecoming race...



### **Acknowledgements:**

I thank Randy Pinch for the excellent reporting he has done for 33N. I must say it is the first time I had a resource of what the district is doing Thus making my job very easy. I also want to thank the clubs that have personally sent me their pictures and news briefs of what has been happening.

Respectfully submitted,  
Joan Stein-Streilein, 33N



# News From the Districts

## District 33K



**Doreen Martel, PDG**

28 Beaver St.  
Holliston, MA 01746  
508-541-5353  
doreen\_martel@yahoo.com

One of the charities that our clubs are always asked to contribute to on an annual basis is Massachusetts Lions Eye Research Fund, Inc. (MLERF). As our clubs grow however, we must be constantly aware that newer club members may not understand the importance of the funds we raise for this important charity. Certainly many members join our clubs to participate in local events, local fundraising efforts and to contribute directly back to their community. What you may not know, is that the funds you raise and donate annually to MLERF do help your local community.

### Who Do You Know?

You might be surprised to learn about how the funds we raise for MLERF go to help people in your local community maintain healthy vision. Here's an easy way to figure out approximately how many people you may know who are directly or indirectly impacted by the various research studies that our donations have funded:

- Do you know someone who is diabetic? – Diabetic retinopathy (DR) is one of the leading causes of blindness in the United States. In 2010, it was estimated that there were approximately 7,000,000 over the age of 40 have suffered from retinopathy associated with diabetes. As more people are at risk for diabetes, the risk of DR is higher. Fortunately, some of the grants we have awarded through MLERF have gone a long way to earlier diagnosis of this



dreaded disease and allowed people to get their sugar under control thereby minimizing the risks.

- Do you know someone with cataracts? – The older we get the more likely we are to have to deal with cataracts. It's a fact of aging. However, there are other risk factors as well including smoking, being overweight, prior eye injuries, etc. Fortunately, the research facilities which you so generously support with your fundraising allows researchers to find ways to identify those at risk for cataracts much sooner. Today, cataract surgery is almost always successful and often leads to improved vision for seniors. What you may not know is that more than 24 million people in the United States have suffered with cataracts.

- Do you know someone with macular degeneration? – Age-related macular degeneration (AMD) impacts seniors at a staggering rate, often robbing them of their ability to enjoy a book, enjoy a television show and can also take away their freedom of movement. While there is no cure for AMD, every Lion should be proud of the funds that we donate annually to fight this dreaded disease. Researchers seem to find a new way to deal with the visual loss as well as offer some therapies that can help slow the progression of this degenerative disease. Our fundraising efforts continue to allow researchers to study the causes of AMD and hopefully find treatments and potentially a cure for this illness.

Chances are, you know at least one person who falls into one of these categories or you know someone who suffers low vision, has a child who has bad vision or is diabetic or maybe you know someone who has glaucoma. One of the best things about the research facilities we support through MLERF is that they are willing to see any member of our community who has an eye problem without regard as to whether they can afford treatment or not. You need

Continued on page 10

# News From the Districts

## District 33S



**David A. Barbour, PDG**

Rehoboth, MA 02769  
508-397-3853  
dbarbour1@aol.com

Greetings Fellow Lions,

Thank You to Retired District 33S  
“Eye Catcher”  
Reporter Lion Arnie Lett.



It's with great pride and privilege that I've accepted the position of the Lions District 33S Massachusetts Lions Eye Research Fund “Eye Catcher” reporter this year, following in the very large footsteps of the outstanding efforts over the years of **Dennis-Harwich Lion Arnie Lett**. Lion Arnie's commitment and dedication to Lionism, and to the Massachusetts Lions Eye Research Fund, has made a positive difference in the lives of so many. In his years of Lions service, and his friendship and mentoring to countless Lions members, Lion **Arnie truly lives up to the Lions motto of “We Serve”**. **Thank you Lion Arnie!**

### 2015-2016 MLERF Officers and 33S Directors

Lions District 33S is honored to have **Lion Martin Middleton** of the Bridgewater Community Lions Club serving as the President of the Massachusetts Lions Eye Research Fund this year. **Lion PDG Joyce Middleton**, also of the Bridgewater Community Lions Club, is serving as the MLERF Executive Director. Our District 33S “MLERF Directors,” who travel throughout the District during the year and speak on behalf of the Fund to their assigned Clubs are as follows-

-PDG Joyce Middleton      Bridgewater Community

-PDG Ray Moreau      Attleboro Tri Boro  
-IPDG Bev Dillon      Bridgewater Academy  
-PDG David A. Barbour      South Attleboro

### Lion District 33S Leads the Way in MLERF 2014-2015 Donations!

Through the leadership and direction of 2014-2015 **District Governor Bev Dillon**, her Leadership Team, and the outstanding efforts of the District 33S Clubs, our Lions District raised a state leading \$315,697.57 to the Massachusetts Lions Eye Research Fund for the Lions year ending June, 30, 2015.

A special note of recognition to the **Acushnet Lions Club** as they passed the half million dollar plateau (**\$509,893.80**) in total donations to the Fund with their 2014-2015 total of **\$24,000.000**. Great job all. **You make a difference!**

### Congratulations to the Easton Lions Club!

The **Easton Lions Club**, Lion Dennis Gutman, President, was recognized at the MLERF 64th Annual Awards Banquet in August, as the number one Club in Massachusetts in donations to the MLERF for the 2014-2015 Lions year with a total of **\$41,330.00** donated for the year. With their state leading donations to the MLERF last year, the Easton Lions have now totaled \$408,705.24 in support of the Fund over the years. Congratulations Easton Lions for all you do!

### -Top Five 2014-2015 Lion District 33S MLERF Club Donors

- |                 |             |
|-----------------|-------------|
| 1. Easton       | \$41,330.00 |
| 2. Acushnet     | \$24,000.00 |
| 3. Provincetown | \$23,360.00 |
| 4. Plymouth     | \$18,400.47 |
| 5. Seekonk      | \$13,088.00 |

Continued on page 11



# News From the Districts

## District 33S



L. Doug Sime, PID  
Bridgewater Lions  
Club



### PID L. Doug Sime MLERF Award

The Lions District 33S “**Lion PID L. Doug Sime Massachusetts Lions Eye Research Fund Program Support and Participation Award**” was created during the 2012-2013 Lions year upon the idea and efforts of then 1st Vice District Governor Raymond Moreau. The award was named in recognition of the outstanding time, support, leadership, and achievements in the Fund by Lion Past International Director L. Doug Sime of the Bridgewater Lions Club. In 1998, Lion PID L. Doug Sime was the first recipient of the Massachusetts Lions Eye Research Fund “Sight Award”.

Five (5) awards are given each year in Lions District 33S, one each in the four Lions Clubs membership size categories, and one for Leo Club contributions.

The categories are-

- Lions Clubs (4)
- Small Clubs (1-25 members)
- Medium Clubs (26-45 members)
- Large Clubs (46-60 members)
- X-Large Clubs (61+ members)
- Leo Club (1)

The primary criteria for the award is a Clubs per capita donations to the Massachusetts Lions Eye Research Fund based on the Clubs total donations to the Fund during the given Lions year and the Clubs final membership count on June 30 of that year. Also, the Clubs participation in Lions District 33S events that support the Fund are taken into consideration including the “Walk for a Cure” in the Fall, the Mid Winter “Belly Flop” Contest, the “Mini- Carnation Day” program, the “PawSox Day at McCoy Stadium” in the Spring, and the “Pennies for Sight” program. Each of the Club award recipients receive a banner patch award with the award presentations made at the following years Lions District 33S Mid Winter Conference. Award recipients to date are as follows-

### Award Recipients

Year	Lions Clubs				Leo Club
	Small (1-25)	Medium (26-45)	Large (46-60)	X-Large (61+)	
2011-2012	Dartmouth	Bridgewater Academy	Mattapoisett	Acushnet	Dennis-Harwich
2012-2013	Dartmouth	Bridgewater Academy	Seekonk	Acushnet	Dighton-Rehoboth
2013-2014	Dartmouth	Bridgewater Academy	Provincetown	Acushnet	Dighton-Rehoboth
<b>2014-2015</b>	<b>Dartmouth</b>	<b>Seekonk</b>	<b>Provincetown</b>	<b>Acushnet</b>	<b>Dennis-Harwich</b>





# News From the Districts

## District 33K Millis Lions Club

Here is the article from the Millis/Medway Press for January 2016:

You might have heard of your local Lions club, but did you know that they've been integral to strides in eradicating blindness? The Massachusetts Lions Eye Research Fund, Inc. (MLERFI), established in 1953, is the largest funder of Massachusetts eye research, and if you joined the Millis Lions on January 9, 2016 for its fifth annual "Crazy Bowling for Blindness" event, you were able to help make a difference.

The Crazy Bowling for Blindness event is just \$15 per person to bowl the whole night (6-9 p.m.) at Ryan Family Amusements, and it includes three strings of bowling and shoes. You can even put together a team (up to five members) and try your hand at crazy bowling styles including bowling with oven mitts, backwards and even lying down. The night will include a cash beer wine bar, and, of course, two large-screen TV's so you can have fun without missing your favorite game. It's all good fun for a good cause, benefitting MLERFI.

"They're the largest funder of cutting edge eye research in this area," says Millis Lions President Debbie Hayes. MLERFI steps in when researchers have trouble getting funding.

In fact, when the Lions Clubs District 33 adopted MLERFI, it presented its first eye grant to Dr. Ingalls of Harvard Medical School. Dr. Ingalls was instrumental in determining that baby blindness was being caused by too much oxygen in the incubators of premature babies. The research led to the simple installation of a five-cent valve in the incubators to control oxygen flow. As a result, the disease known as blind baby disease was practically eradicated.



MLERFI awards over \$1 million in grants annually, funded completely by donations. Over the years, it has funded \$32 million in research, including, according to its website, [www.mlerfi.org](http://www.mlerfi.org):

- the Ophthalmic Plastics Laboratory, which developed pure plastic corneas to be used for people afflicted with scarred corneas.
- the Joslin Clinic, which developed the "Lions laser Lens," a device that can detect diabetes in the eye before any other physical signs appear.
- Tufts New England Medical Center, which developed radioactive isotopes to cure eye and brain tumors.
- Schepens Eye Research Institute (formerly known as the Retina Foundation), which constructed the first "upside down" operating table to repair detached retinas
- Boston University Medical Center, which conceived and developed the first photocoagulator ophthalmic laser and the first clinical specular microscope.

MLERFI has also helped to establish three major research centers in Boston: The Howe Laboratory at Massachusetts Eye & Ear Infirmary, the Massachusetts Lions Eye Research Laboratory at Boston University Medical Center, and the Lions Laboratory for Genetic Research at Schepens Eye Research Institute.

According to Hayes, 100% of the money MLERFI receives goes to eye research institutions, and 100% of the proceeds from the January 9th bowling event will go to MLERFI.



# News From the Districts

## District Y continued

doing this year to help your club raise your donation this year by at least 10% from last year's donation to MLERFi so that more research can be funded? Springfield 16 Acres had a spaghetti dinner this fall and the Northampton Lions club is selling their February calendars this winter to help raise 10% more to help their clubs to reach their funding goals for 2015.

The funds you gave in the past to researchers have produced some remarkable results. Are you aware that there are three major laboratories dedicated to the Massachusetts Lions by three major research facilities; the Howe Laboratory of Ophthalmology at Mass Eye and Ear, Massachusetts Lions Eye Research Laboratory at BU Medical Center and the Lions Laboratory for Genetic Research at Schepens Eye Research Institute. Over the years Lions have donated over 32 million dollars for research and unimaginable dreams have come true as researches with the "seed monies" donated by the Lions of Massachusetts that they used to see if those initial trials and studies would warrant further research. Those trials and studies have lead to further research that not only saved my eyesight but many others who are known to you and those with no names but have eyes that can see because you took the time to gather those pennies for "Lighting the Way to Cure Blindness". Let's keep on going to see what discoveries are to be found by those brilliant and dedicated researchers that we fund.

Respectfully submitted,  
Christine Waller, 33Y

## District K continued

director's member to find out how to set up an appointment based on the specific eye concern. That's it: That's what your donations to MLERF do.

### How You Can Help

Naturally the continuing financial support of your club is crucial to providing funds to these research facilities. We ask every club to support DG Bill and



help him reach his year-end fundraising goals for MLERF. But there are other things you can do to help right in your own community. First, educate your club members. Make sure they know that MLERF should be considered part of your community projects because the important research these facilities conduct is felt in every community. Second, educate your community: Bring in the eyemobile for screenings, distribute eye health brochures at your community events, see if you can get your local newspaper to run an article, or more, on the importance of eye health. We only get one set of eyes and preserving them is important.

The Lions Clubs of District 33K have always gone above and beyond with their commitment to supporting Massachusetts Lions Eye Research Fund, Inc. and we hope this year will be no different. When you are making your donations this year, if you have a special town or club anniversary coming up, consider making an extra \$1,000 donation in recognition of that anniversary and giving a sight award to a worthy recipient.

Once again, we're asking every club to take a look at your budget and consider donating a small amount more to MLERF than you did last year. The importance of the work that is done by these researchers cannot be understated. While we understand that supporting your community is crucially important, especially when economic times are challenging, just remember that every dollar you donate to MLERF is spent wisely and in some manner comes directly back to your community in terms of better diagnosis and treatment of devastating eye diseases that can lead to permanent blindness. Your donations allow you to live up to our most noble of causes: Being Knights of the Blind.

Yours in Lionism,  
PDG Doreen Martel

# News From the Districts

## District S continued

### 2015 District 33S MLERF- Journey for Sight “Walk for a Cure” Raises \$9,500.00!

Under the organization and direction of event Co-Chairs **Lion Past District Governor Ray Moreau** of the **Attleboro Tri Boro Community Lions Club** and **Lion District 33S Cabinet Secretary Ken Corti** of the **Halifax Lions Club**, the 2015 Lions District 33S “Walk for the Cure of Blindness and Diabetes” raised **\$9,500.00** for the Massachusetts Lions Eye Research Fund on the cool and windy weekend of September 26-27, 2015 at Scusset Beach alongside the scenic Cape Cod Canal.

The annual “Walk” is a fun and fit activity for District Lions, Leo’s, and families, and includes the Lions “pledge” walk along the Canal, food, entertainment for all ages, the “Shriner’s Clowns”, the “Wheels of Time” Car Club, the popular “Pie Eating Contest”, camping overnight at the Scusset Beach camp sites, a “Chicken Dinner” on Saturday evening sponsored by the Raynham Lions Club, and an old fashioned “Country Breakfast” on Sunday morning sponsored by the Attleboro Tri Boro and Halifax Lions Clubs.

The goal is to help 2015-2016 33S District Governor Roland Grenier, Jr. reach his anticipated goal for District donations to the MLERF. All funds raised at the “Walk” go directly to research grants awarded to Boston area institutions including the Schepens Eye Institute, Children’s Hospital, and the Joslin Diabetes Center; for work related to the prevention and cure of eye related diseases.



The weekend started with registration at 9:00 a.m. on Saturday morning at the main parking lot at Scusset Beach with Lions from throughout the District arriving and preparing for a day of fun, Lionism,

and service. The food and cooking for the event was provided by the following Lions Clubs- Abington, Acushnet, Rockland, Halifax, Taunton, Sandwich-Bourne, Rochester, Middleboro, and South Attleboro. The “Pie Eating Contest” was a crowd pleaser with District Governor Roland stepping up to the plate and taking a pie in the face from “First Lady” Paula Grenier. The “Pie in the Face” to the Governor raised a \$165.00 donation to the MLERF-JFS from a group of enthusiastic Lion on-lookers!



Congratulations to the **Rockland Lions Club** (\$1,500.00) and the **Acushnet Lions Club** (\$1,500.00) for their Club lead donations to the event.

“Walk” Co-Chairs **Lion PDG Ray Moreau** and **Lion CS Ken Corti** extend their sincere appreciation to all supporters, volunteers, participants, and the Club’s who donated the raffle gifts to this years **MLERF- Journey for Sight “Walk for a Cure,”** as the tremendous efforts put in by all made the “Walk” another success for the benefit for a great cause!

Respectfully submitted,  
David Barbour, PDG



# News From the Districts

Bridgewater Academy Lions has held several fundraising projects for Mass. Lions Eye Research Fund, Inc. in the past few months. On Saturday, September 12th, their 3-hour Pennies for Sight Canister Drive raised \$723.60. On Tuesday, October 6th, they held a "Dining for a Cause" event at the Bridgewater Ninety-Nine Restaurant which generated a donation of \$117.30 (15% of guest checks with special voucher) from the 99 Restaurant's parent company directly to MLERF.

On Sunday, November 1, Bridgewater Academy Lions held their 22nd Annual BTV9 Auction to benefit MLERF. The event was chaired again this year by Lion Vale Sime. The auction was broadcast live on local BTV9 and live-streamed online from the station's website. Bids are phoned in to a designated auction phone number and received by Lions and volunteers on a 5-phone line system. One hundred percent (100%) of all bid monies and monetary donations received through the auction will be turned over to MLERF by Bridgewater Academy Lions. To date the club has collected \$10,247.00 from this year's event. These auction receipts will bring the combined 22-year total raised from their annual TV auctions to \$220,683.00.

How the auction works: Bridgewater Academy Lions solicits and receives new goods and services from local businesses and friends. Any other Lions Club that donates an item receives credit for a donation to MLERF in the amount of the bid money paid for their item. Nothing is deducted for expenses since BALC raises separate sponsorships to cover those costs. Bridgewater Academy Lions Club handles the several months of preparation work including item descriptions, bid board preparation, previews, promotion, displays, merchandise pickup and accounting. BTV provides their studio facilities, staff, and expertise for the production at no charge.

In addition to these club fundraising projects, individual Bridgewater Academy Lions members have participated in the \$36.00 "One Light Hour of Pennies" Challenge, purchased a total of 20 bunches of carnations, and attended the Walk for the Cure at Scusset Beach.

-----

It took me a long time to choose only 3 photos from the auction but I hope these attached pictures and separate sheet of captions will give a good overview of the project. Let me know if there is any problem with the photos or captions sheet coming through

Best wishes for a joyous holiday season and a happy new year.

Yours in Lionism,

Lion Diane Sears  
BALC2nd VP/Newsletter Editor



# News From the Districts



In the studio area, PID L. Doug Sime and PCC Paul Schleicher read descriptions of items on the Specials Board, which is reviewed periodically and open for bids throughout the night. Lion Peg Dunford and Leo Kat Middleton are busy updating the phone bids on the three bid boards in play at once.



In the studio area, Bridgewater Academy Lions Theresa Dunford, IPCST, and Eileen Prisco read the initial descriptions of the items on Board 4, which is open for bidding for about 30 minutes. New boards were opened for bids each hour.



In the separate display showroom, Bridgewater Academy Lion Doralee Pratt focuses the TV camera on each individual item on Board 4, while club member Cheryl Germaine views the TV monitor for camera angle. Member Joanne Silipigno checks her list for the next item to be on camera.



# ANNUAL INSTALLATION BANQUET PHOTOS



# ANNUAL INSTALLATION BANQUET PHOTOS



# ANNUAL INSTALLATION BANQUET PHOTOS

## DISTRICT 33Y CLUB AWARDS



## DISTRICT 33A CLUB AWARDS





# ANNUAL INSTALLATION BANQUET PHOTOS



## DISTRICT 33N CLUB AWARDS



# ANNUAL INSTALLATION BANQUET PHOTOS



## DISTRICT 33N CLUB AWARDS



# ANNUAL INSTALLATION BANQUET PHOTOS



## DISTRICT 33K CLUB AWARDS



# ANNUAL INSTALLATION BANQUET PHOTOS

## DISTRICT 33K CLUB AWARDS



## DISTRICT 33S CLUB AWARDS



# ANNUAL INSTALLATION BANQUET PHOTOS



## DISTRICT 33S CLUB AWARDS



# ANNUAL INSTALLATION BANQUET PHOTOS

## DISTRICT 33N CLUB AWARDS



# MLERF FINANCIALS - ANNUAL REPORT

**MASSACHUSETTS LIONS EYE RESEARCH FUND, INC.**  
**ANNUAL REPORT JULY 1, 2014 TO JUNE 30, 2015**

INCOME:		Percent	Amount	Totals
Contributions of Lions, Lioness and Leo Clubs				
Including Memorials, Journey for Sight,	District - Y	9.1%	88,779.50	
Canisters and Individual Donations	District - A	10.9%	106,794.15	
For Massachusetts Research Grants	District - N	28.1%	274,519.27	
	District - K	19.6%	191,848.36	
	District - S	<u>32.3%</u>	<u>315,697.57</u>	
<b>Total Research Contributions</b>		100.0%		\$977,638.85

Other Income:				
Installations & Awards Night			4,049.00	
Interest Income			27,593.14	
Hellen Keller Pins			7,442.50	
Jerseys T-Shirts			1,275.00	
Uncommitted Funds used for Research Grants			374.30	
Trust & Endowment Fund Interest for Presidential Grant 14/15			64,422.92	
Trust & Endowment Club & Individual Contributions 14/15			1,635.00	
Exchange & Miscellaneous			45.00	
<b>Total Other Income</b>				\$106,836.86

Committed Funds:				
Trust & Endowment Fund Interest for Presidential Grant 2012/2013			3,492.48	
Trust & Endowment Fund Interest for Presidential Grant 2013/2014			12,825.62	
Trust & Endowment Fund Interest for Presidential Grant 2014/2015			64,422.92	
Club Donations 2014/2015			977,638.85	
Pay Pal – Research			104.29	
Pay Pay – T&E			319.15	
<b>Total Committed Donations</b>				\$1,058,803.31

**EXPENSES:**

Approved research grants and miscellaneous distributed:				
B.U. School of Medicine			180,000.00	
Joslin Diabetes Center			180,000.00	
MEEI (Mass Eye & Ear)			180,000.00	
Schepens Eye Research Institute			180,000.00	
New England Eye Center (Tufts School of Medicine)			124,000.00	
Childrens Hospital			140,000.00	
University of Mass Medical School			46,000.00	
Presidential Grant (T&E & LCIF) Children's Hospital 2112/2113			56,256.50	
Presidential Grant (T&E & LCIF) Mass Eye & Ear 2113/2114			50,000.00	
T&E Club Donations 2013/2014			1,000.00	
T&E Club & Individual Donations 2014/2015			1,635.00	
<b>Research Grants, T&amp;E and Miscellaneous Distributed</b>				\$1,138,891.50

Administrative expenses:				
General Administrative			2,487.07	
Directories			1,513.55	
Auditor			5,345.00	
Bond			820.00	
Mid-Winters & Conferences			1,623.95	
Plaques & Awards			4,612.84	

Committee expenses:				
Eye Catcher			15,813.69	
Journey For Sight			0.00	
Canisters & Pennies			756.57	
Sight Awards			3,330.66	
Memorials			931.00	
Installation & Awards Night			7,400.12	
Public Relations			0.00	
Grants			0.00	
Long Range Planning			0.00	
Constitution & By-Laws			0.00	
Trust & Endowment			0.00	
Helen Keller Pins			6,912.69	
Jerseys T-Shirts			1,413.60	
Presidents Pin			700.00	
<b>Administrative &amp; Committee Expenses</b>				\$53,660.74

**Total Expense** \$1,192,552.24

Overall Increase/Decrease of Income/Expenses for 2014/2015				\$-62,155.00
Contributions Unspent from previous years				\$0.00
Uncommitted Funds as of June 30, 2015				\$320,430.32

**TRUST & ENDOWMENT IRREVOCABLE TRUST FUND:**

BANK OF AMERICA				
Market Value as of July 1, 2014			1,388,236.74	
Net Increase/Decrease			<u>-26,925.89</u>	
<b>Market Value of Fund as of June 30, 2015</b>				<u>\$1,361,310.85</u>

RESPECTFULLY SUBMITTED: PDG William T. Murphy, Treasurer



# MLERF FINANCIALS - MEMORIALS

## MEMORIAL DONATIONS - DISTRICT 33-Y

IN MEMORY OF	CONTRIBUTOR	AMOUNT
DG Thomas E. Sullivan	PDG Dick & Betty Ferrucci	50.00
DG Thomas E. Sullivan	M/M Leon Nicolliello	50.00
DG Thomas E. Sullivan	Travelers State Serv Team	110.00
DG Thomas E. Sullivan	Mike & Nancy Mathras	25.00
DG Thomas E. Sullivan	Cathy McDonnell	50.00
DG Thomas E. Sullivan	Bernice Drumheller	25.00
DG Thomas E. Sullivan	Janice Pilon	25.00
DG Thomas E. Sullivan	Mary Knight	50.00
DG Thomas E. Sullivan	PID L. Doug Sime & Vale	25.00
DG Thomas E. Sullivan	Jim & Donna Wojnarowicz	50.00
DG Thomas E. Sullivan	M/M D.Colaccino	50.00
DG Thomas E. Sullivan	Linda & Themis Tsoumas	100.00
DG Thomas E. Sullivan	Matt & Tamara Denneen	50.00
DG Thomas E. Sullivan	Timothy & Deborah O'Brien	50.00
DG Thomas E. Sullivan	Joanne Losito	25.00
DG Thomas E. Sullivan	Phil & Sue Watts	25.00
DG Thomas E. Sullivan	Jack Hulmes, Jr.	100.00
DG Thomas E. Sullivan	M & R Richards	25.00
DG Thomas E. Sullivan	PDG Roger Jones	25.00
DG Thomas E. Sullivan	Jeanne Lombardo	50.00
DG Thomas E. Sullivan	Elizabeth Soucy	50.00
DG Thomas E. Sullivan	John Walsh	25.00
DG Thomas E. Sullivan	Jodi Turek	20.00
DG Thomas E. Sullivan	Jane DiSciacca	50.00
DG Thomas E. Sullivan	Diane Paciatti	25.00
DG Thomas E. Sullivan	Donna Klaum	25.00
DG Thomas E. Sullivan	Linda Gay	25.00
DG Thomas E. Sullivan	Karen L. Vadnais	20.00
DG Thomas E. Sullivan	St. Mary's School	75.00
DG Thomas E. Sullivan	Karl Ozga	10.00
DG Thomas E. Sullivan	Dennis Christine Waller	50.00
DG Thomas E. Sullivan	Robert & Mary Rouleau	50.00
DG Thomas E. Sullivan	Sharon Lamoureau	25.00
DG Thomas E. Sullivan	Mike & Wendy Lounon	50.00
DG Thomas E. Sullivan	Matt & Tamara Deneen	50.00
DG Thomas E. Sullivan	PDG Wayne P. Smith	50.00
PDG Charles DeAngelus	PDG Wayne P. Smith	50.00
Lion "Dick' Dexter	Ruth Dexter	500.00
Lion "Dick' Dexter	John Walsh	25.00
Lion "Dick' Dexter	MMY Consulting	100.00
Allen Damon	Thomas Dacey	20.00
PDG Robert Finck	PID Chuck & Claire Kostro	20.00
Lion Donald A. Sorel	Ann Marie Foley	25.00
Lion Donald A. Sorel	Edward & Irene Gallerani	25.00
Lion Donald A. Sorel	Charlene Bushey-Pilon	10.00
Lion Donald A. Sorel	Bob & Faith Simmons	20.00
Lion Donald A. Sorel	Richard & Caroline Basset	50.00
Lion Donald A. Sorel	Dolores C. Ascioti	20.00
Lion Donald A. Sorel	M/M John Negrucci	30.00
Lion Donald A. Sorel	Joanne Mason	25.00
Lion Donald A. Sorel	William Egan	25.00
Lion Donald A. Sorel	DG Roger & Loretta Jones	25.00
Lion Donald A. Sorel	J & C McKenna	20.00
Lion Donald A. Sorel	Albert N. Yenian	50.00
Lion Donald A. Sorel	Paula & David Raiche	35.00
Lion Donald A. Sorel	Elaine Taupier	50.00
Lion Donald A. Sorel	Gail Demers	25.00
Lion Donald A. Sorel	Frances Serra]	25.00
Lion Donald A. Sorel	Michael & Mary Roy	25.00
Lion Donald A. Sorel	Patricia Corbin	25.00
Lion Donald A. Sorel	John & Rosemary Walsh	25.00
Lion Donald A. Sorel	Rosemarie Kiefer	50.00
Lion Donald A. Sorel	Matthew Blackak	30.00
Lion Donald A. Sorel	Harold & Joy Hannon	25.00
Lion Donald A. Sorel	Michael & Carolyn Resio	25.00
Lion Donald A. Sorel	Thomas Dacey	25.00
Lion Donald A. Sorel	Dennis & Carlene Roberts	25.00
Lion Donald A. Sorel	Amelia McMeans	15.00
Lion Donald A. Sorel	Robert & Sandra Harkins	50.00
Lion Donald A. Sorel	Christina Calabrese	50.00
Lion Donald A. Sorel	Charles Calabrese	
Lion Donald A. Sorel	& Joan Kane	100.00
Lion Donald A. Sorel	Bernice Burton	20.00
Lion Donald A. Sorel	Dian Curran	50.00
Lion Donald A. Sorel	Susan Butler	50.00
Lion Donald A. Sorel	Adele Gallano	10.00
Lion Donald A. Sorel	James & Miriam Taupier	50.00
Lion Donald A. Sorel	Gordon Jameson	
Lion Donald A. Sorel	& Bonnie Layman	100.00
Lion Donald A. Sorel	Maxine Sepanek	25.00
Daniel Champigny	Ann Sorel	35.00
Ann McManus	DG Roger & Loretta Jones	25.00
James H. Davis	George & Donna Gaudet	10.00
James H. Davis	Earl & Elaine Quimby	20.00
James H. Davis	Art & Kathy Souza	20.00
James H. Davis	Don & Joyce Ogonowski	25.00
James H. Davis	Walter Clune	25.00
James H. Davis	Daniel J. Brochu	50.00
James H. Davis	Richard & Sally Redin	25.00
James H. Davis	Henry R. Carla Lafleur	50.00
James H. Davis	Smolenski Family	100.00
James H. Davis	Beverly Tetreault	50.00
James H. Davis	Patricia Zumbruski	100.00
James H. Davis	Laura Phillips	50.00
James H. Davis	Judy & Ed Speight	40.00
Lioness Diane Simpson	Ann Sorel	25.00
Lioness Diane Simpson	Joy Hannon	25.00
PDG Don Adams	PCST Sara Adams	500.00
Judith J. Dunn	Susan & Al Grimaldi	100.00
TOTAL HONORARY & MEMORIAL		
DONATIONS 33-Y \$4,785.00		





# MLERF FINANCIALS - MEMORIALS

## CLUB MEMORIAL DONATIONS 33-Y

<u>IN MEMORY OF</u>	<u>CONTRIBUTOR</u>	<u>AMOUNT</u>
DG Thomas Sullivan	Belchertown Lions	1,000.00
DG Thomas Sullivan	Adams Lions	100.00
DG Thomas Sullivan	Cheshire Lions	100.00
Richard K. Cook, Sr.	Belchertown Lions	50.00
Lion James Davis	East Longmeadow Lions	100.00
Lion James Davis	East Longmeadow Lions	50.00
Lion Donald Sorel	Agawam Lioness	25.00
Lioness Diane Simpson	Agawam Lioness	175.00

TOTAL HONORARY & MEMORIAL  
DONATIONS 33-Y 1,600.00



# MLERF FINANCIALS - MEMORIALS

## CLUB MEMORIAL DONATIONS 33-Y

IN MEMORY OF	CONTRIBUTOR	AMOUNT
DG Thomas Sullivan	Belchertown Lions	1,000.00
DG Thomas Sullivan	Adams Lions	100.00
DG Thomas Sullivan	Cheshire Lions	100.00
Richard K. Cook, Sr.	Belchertown Lions	50.00
Lion James Davis	E Longmeadow Lions	100.00
Lion James Davis	E Longmeadow Lions	50.00
Lion Donald Sorel	Agawam Lioness	25.00
Lioness Diane Simpson	Agawam Lioness	175.00

**TOTAL HONORARY & MEMORIAL  
DONATIONS 33-Y 1,600.00**

## MEMORIAL DONATIONS - DISTRICT 33-A

IN HONOR OF	CONTRIBUTOR	AMOUNT
Jim Wagner,	2nd VDG Dave O'Brien	100.00

## MEMORIAL DONATIONS - DISTRICT 33-A

IN MEMORY OF	CONTRIBUTOR	AMOUNT
Wilfred Richards	Marble Mainini & Cynthia	50.00
Maria Santucci	Marble Mainini & Cynthia	50.00
PDG Joseph Lambert	PID John Pettis, Jr.	25.00
Alice Giedi	M/M Albert Latini	40.00
G. Calvin Swilley	Nelson Calkins	30.00
Warren C. Jeannotte	Susan C. Cowdrey	50.00
Warren C. Jeannotte	Janet & David	500.00
Warren C. Jeannotte	The Auger Family	50.00
Warren C. Jeannotte	Marilyn Engblom	25.00
Warren C. Jeannotte	Barbara Laborde	25.00
Warren C. Jeannotte	Rusty Tinsley	10.00
Warren C. Jeannotte	Raymond & Dorothy Delisle	25.00
Warren C. Jeannotte	James Tomkinson	50.00
Warren C. Jeannotte	Janice Johnson	50.00
Warren C. Jeannotte	Barbara & William Campbell	25.00
Warren C. Jeannotte	Thomas & Debbie Sasso	100.00
Warren C. Jeannotte	Louise R. Williams	25.00
Warren C. Jeannotte	M/M Richard Obarowski	75.00
Warren C. Jeannotte	Dudley Elem. School Staff	100.00
Warren C. Jeannotte	Gibons Middle. School Staff	40.00
Robert "Bob" Doucette	Robert Lambert	20.00
Robert "Bob" Doucette	Diane & Bert Soucy	100.00
Robert "Bob" Doucette	PID Chuck & Claire Kostro	15.00
Robert "Bob" Doucette	Ronald Maxim	125.00
Robert "Bob" Doucette	Bill McClurg	200.00
Robert Doucette	Joe, Patty, Zach & Molly Cloutier	50.00
Robert Doucette	PCC Bo & Diane Meunier	100.00
Robert Doucette	Richard & Marcia Marcoux	25.00

## IN MEMORY OF CONTRIBUTOR AMOUNT

Robert Doucette	Julie Jonas	75.00
Robert Doucette	Walter & Lena Payout	25.00
Robert Doucette	Paul & Cheryl Boria & Family	100.00
Robert Doucette	Debra Beaudry	25.00
Robert Doucette	Brenda Bianculli, CPA	50.00
Robert Doucette	Barbara Phelan	20.00
Robert Doucette	Jeannine & Bernie Vaillette	50.00
Robert Doucette	McIntosh Family	25.00
Robert Doucette	Pete & Louise Wojtkiewicz	25.00
Robert Doucette	Claude & Danielle Philibert	25.00
Robert Doucette	June F. Klem	100.00
Robert Doucette	William J. Rand	300.00
Robert Doucette	Virginia Camarda	25.00
Robert Doucette	Robert Jonus	50.00
Robert Doucette	M/M Doug Baker	25.00
Robert Doucette	Patricia Boutillette	100.00
Robert Doucette	Jane Joncas	20.00
Robert Doucette	PCST Denise Andrews	25.00
Robert Doucette	Robert & Mary Gleason	100.00
Robert Doucette	PDG Joyce Hogan	25.00
Robert Doucette	Marble & Cynthia Mainini	25.00
Catherine D. DuComb	M/M Norman Guerette	25.00
Rita F. Vitalini	Marble & Cynthia Mainini	50.00
Michael C Vassallo	John Tyler	5.00
William Gardner	Richard L. Rizoli	25.00
William Gardner	M/M Philip W. Morin	25.00
William Gardner	Helen & Kevin Welch	100.00
William Gardner	David Bird & Family	40.00
William Gardner	Lina & Dwight Watson	50.00
William Gardner	Rachel & Tom Becker	100.00
Lioness Carol Boucher	Milan & Estella Knowels	10.00
Lioness Carol Boucher	H. Pierce	10.00
Lioness Carol Boucher	Elixabeth Robertson	15.00
Lioness Carol Boucher	Nelson Calking	20.00
Lioness Carol Boucher	Joyce Lambert	20.00
Lioness Carol Boucher	Suzanne Tatro	25.00
Lioness Carol Boucher	Guy, Lori & Peter DeFlorio	25.00
Lioness Carol Boucher	Lionel & Carolyn Carbonneau	25.00
Lioness Carol Boucher	Cathy Moody	25.00
Lioness Carol Boucher	Gregory & Julia Meyer	50.00
Lioness Carol Boucher	Karen Wiberg	50.00
Lioness Carol Boucher	Richard Beaudreau	100.00
Lioness Carol Boucher	Lucille & Bill Bailey	25.00
Lioness Carol Boucher	Erna Ketelson	50.00
Lioness Carol Boucher	Brookfield Elem. School	50.00
Darel Nowers	PDG Wayne P. Smith	50.00

**TOTAL HONORARY & MEMORIAL  
DONATIONS 33-A \$4,265.00**



# MLERF FINANCIALS - MEMORIALS

## CLUB HONORARY DONATIONS 33-A

IN HONOR OF	CONTRIBUTOR	AMOUNT
PDG Mark Desmarais	Mendon Lions	50.00

## CLUB MEMORIALS DONATIONS 33-A

IN MEMORY OF	CONTRIBUTOR	AMOUNT
John Sprague	Rutland Lions	20.00
Dan Meuer	Mendon Lions	50.00
Robert L. Buckley, PP	Palmer Lions	50.00
Dorothy Meuser	Paxton Lions	102.00
Ronald Moss	Millbury Lions	100.00
Elizabeth Vulter	Millbury Lions	100.00
Waldo Cummings	Brookfields Lions	50.00
John Corbett	Palmer Lions	25.00
Robert "Bob" Doucette	Spencer Lions	1,000.00
Robert "Bob" Doucette	Rutland Lions	25.00
Catherine D. DuComb	Palmer Lions	50.00
Richard Peppard	Harvard Lions	50.00
Pamela Wood	Millbury Lions	100.00
Lion Carol Boucher	Rutland Lions	50.00
Robert Counsman	Palmer Lions	25.00
Heidi Wilder	Millbury Lions	100.00
Constance L' Hussier	Westminister Lions	50.00
Judith A. Huckleberry	Westminister Lions	50.00
Barbara Ambrosino	Mendon Lions	50.00
Joseph Reed	Mendon Lions	50.00
Mildred "Miller" Foye	Mendon Lions	50.00
Allan Marzilli	Mendon Lions	50.00

TOTAL HONORARY & MEMORIAL  
DONATIONS 33-A \$2,247.00

## HONORARY DONATIONS - DISTRICT 33-N

IN MEMORY OF	CONTRIBUTOR	AMOUNT
Nicholas & Judy Tierno	Paul & Nancy Muise	100.00
55th Wedding Anniversary	Dianne & David French	100.00
John & Sandra Mandracchia		50.00
Eleanor & Frank Vozzello		25.00
DG Joanie & Randy Baptist	Liz & John Pettis	40.00
Jeanne & Joe Gentleman	Joan Parcewski	50.00
George & Mary Burnell	John & Sondra Lucente	25.00
DG Joan Baptiste	Joseph Gentleman III	100.00

## MEMORIAL DONATIONS - DISTRICT 33-N

IN MEMORY OF	CONTRIBUTOR	AMOUNT
Ray Friedrich	John D. Queen	25.00
Louise Rossetti	Willaim Hashem	5.00
Helen Atwood	James Silva & Lois White	20.00

IN MEMORY OF	CONTRIBUTOR	AMOUNT
Eleanor Mastromatteo	John & Sondra Lucente	25.00
Robert Cody	James Silva	20.00
Joel Cline	James Silva	15.00
Leo Fantasia	John & Sondra Lucente	25.00
Dona Karkane	David & Pamela Rossler	25.00
Marilyn Costanzo	James Silva	25.00
Paul R. Bartlett	James A. Bailey	20.00
Claire Lacroix	Doris Hall	10.00
Raymond Asselin	Doris Hall	20.00
Raymond Asselin	Mr. & Mrs. Lucien Hall	25.00
Peter McComiskey	John D. Queen	25.00
Richard Querze	John D. Queen	25.00
Norris Yonker	Ed Friedrich	20.00
Kenneth D. Gagnon	James Silva & Lois White	40.00
Robert Hall	Doris Hall	10.00
Robert Hall	Lucien & Theresa Hall	10.00
John Ercolini	Doris Hall	5.00
Carol Mackey	Doris Hall	10.00
Edward S. Kawa	Doris Hall	6.00
Charles Priest	John & Liz Pettis	25.00
Charles Priest	John & Candy Reale	50.00
Charles Priest	& Marion Shaw	
Carol A. Gavin	Jim Silva & Lois White	40.00
Robert "Bob" White, Sr.	Alicia A. Nutile	20.00
Robert "Bob" White, Sr.	Dawn Andreatta/Becky Crescia	50.00
Robert "Bob" White, Sr.	Jean M. Nutile	20.00
Robert "Bob" White, Sr.	Brayton Wilson Cole Corp.	100.00
Robert "Bob" White, Sr.	David A. Hodges, Sr.	50.00
Robert "Bob" White, Sr.	Mark & Pauls Hamblett	50.00
Robert "Bob" White, Sr.	Nashoba Brooks School	150.00
Robert "Bob" White, Sr.	Joanne M. Deluca, CPA	75.00
Robert "Bob" White, Sr.	Michael & Donna Cusato	50.00
Robert "Bob" White, Sr.	Arlene & Dan Friel	25.00
Robert "Bob" White, Sr.	Jack Russo	50.00
Robert "Bob" White, Sr.	Mary Kiley	25.00
Robert "Bob" White, Sr.	M/M Gerald Lees	25.00
Robert "Bob" White, Sr.	Martha Shaughnessy and Robert Callahan	20.00
Robert "Bob" White, Sr.	Judith A. Nutile	50.00
Robert "Bob" White, Sr.	M/M John Martini	50.00
Robert "Bob" White, Sr.	Peggy Gagnon	10.00
Robert "Bob" White, Sr.	Dave & Sue Nocella	25.00
Robert "Bob" White, Sr.	Susan Richardson	25.00
Robert "Bob" White, Sr.	Pamela & Bob Simpson	25.00
Robert "Bob" White, Sr.	Joan Nutile	15.00
Robert White, Sr.	Annette & Frank Coccoluto	50.00
Robert "Bob" White, Sr.	Jean Donovan	20.00
Robert "Bob" White, Sr.	Jim & Marge Landry	25.00
Robert "Bob" White, Sr.	Mary Jane & Richard O'Rourke	50.00
Robert "Bob" White, Sr.	Irene & Joe Simas	20.00
Robert "Bob" White, Sr.	Claire I Murphy	25.00
Robert "Bob" White, Sr.	Ed & Mary Johnson	25.00
Robert "Bob" White, Sr.	Dick & Bev Hagen	25.00



# MLERF FINANCIALS - MEMORIALS

IN MEMORY OF	CONTRIBUTOR	AMOUNT
Robert "Bob" White, Sr.	Marie & Leonard Landino	20.00
Robert "Bob" White, Sr.	Carole Greaves	50.00
Olga Pappas	Ed Friedrich	20.00
Dennis Burtchell	Stan & Marjorie Simeone	10.00
Leo Lore	James Silva & Lois White	40.00
Matthew F. Grace	James Silva	15.00
Matthew F. Grace	John & Liz Pettis	25.00
Julia E. Shempa	Annmarie & Jim Shimansky & Donald & Nancy Scioly	100.00
Mathew Ryan	John & Liz Pettis	25.00
Frank Figucia, Jr.	Catherine A. Figucia	50.00
Zelma G. Koslavelon	Doris Hall	7.00
Steve Dodge	Jack Russo	50.00
Charles Kirk	Jack Russo	25.00
Tony Brino	James Silva & Lois White	40.00
Charles Mavroules	Jim Silva	10.00
William Coakley, Jr.	Robert & Donna Hartshorn	20.00
Jeanne Elia	Woburn School Nurses	75.00
Jeanne Elia	Americo Galante	50.00
Jeanne Elia	Loretta E. Moore	25.00
Jeanne Elia	Michael & Donna Cusato	50.00
Jeanne Elia	Mary Famiglietti	5.00
Jeanne Elia	Annette & Frank Coccoluto	25.00
Jeanne Elia	Irene & Joe Simas	20.00
Jeanne Elia	Thomas Qualey	100.00
Jeanne Elia	M/M Joseph Wells	20.00
Jeanne Elia	Susan Richardson	25.00
Jeanne Elia	Altavista Elem. School Staff	60.00
Jeanne Elia	James Mahoney	50.00
Jeanne Elia	Susan Johnson	25.00
Jeanne Elia	Date & Roberta Clements	25.00
Jeanne Elia	Robert & Karen McGann	25.00
Jeanne Elia	Joseph V. Elia	50.00
Jeanne Elia	Bob & Myrtle Peary	10.00
Jeanne Elia	Fran & Cindy Maher	20.00
Jeanne Elia	James & Margaret Elia	100.00
Jeanne Elia	Cheryl DiPanfilo & Charles Gower	100.00
Penney McKenney	Irene & Joe Simas	25.00
Joseph N. DiMauro, Sr.	Irene & Joe Simas	10.00
Harold Kiley	Irene & Joe Simas	25.00
Vincent Tropea	Irene & Joe Simas	10.00
Bill Coakely, Sr.	James A. Bailey	20.00
Albert William "Bill" Diotte, Jr.	William Hashem	5.00
Robert Killiam	PDG Brian Abbott	10.00
Janet T. Dever	Mary L Hayden	50.00
Janet T. Dever	Joyce F. Donnellan	10.00
Janet T. Dever	Roselyn L. Gray	50.00
Janet T. Dever	Betty Higgins	25.00
Janet T. Dever	Ann D. Donnell	100.00
Janet T. Dever	Bob & Barbara Clark	50.00
Janet T. Dever	M/M John Martini	50.00
Janet T. Dever	The Rutowski Family	200.00
Janet T. Dever	Ellen M. Kauer	10.00
Janet T. Dever	Jack Russo	25.00
Janet T. Dever	Candy & John Reale	20.00
Janet T. Dever	Nancy Burke	50.00

IN MEMORY OF	CONTRIBUTOR	AMOUNT
Janet T. Dever	Pat Callahan	25.00
Janet T. Dever	Ned & Pat Dever	250.00
Janet T. Dever	Reeves Sunshine Fund	40.00
Janet T. Dever	Nancy Chisholm	20.00
Janet T. Dever	Fresenius Medical Care	100.00
Janet T. Dever	Marie & Leonard Landino	20.00
Janet T. Dever	Irene & Joe Simas	25.00
Janet T. Dever	Marge & Jim Landry	25.00
Janet T. Dever	Bob & Myrtle Peary	
Bob Simonds	Jack Russo	25.00
Margaret Danielson	M/M John Lucente	25.00
Gregory Calvert	Jack Russo	25.00
Eleanor DeMarco	William Hashem	5.00
Fred Malcolm, Sr.	ID John Pettis, Jr.	25.00
Ginny Kimball	Bob & Myrtle Peary	10.00
Dominic Corsetti	Betty Jo Kaveney	50.00
Dominic Corsetti	Jack Russo	50.00
Dominic Corsetti	M/M John Martini	50.00
Dominic Corsetti	K & N Oil Service	50.00
Dominic Corsetti	M/M Oliver Galante	15.00
Dominic Corsetti	Beverly McLaughlin	10.00
Dominic Corsetti	The Paschal Lamb Co.	100.00
Dominic Corsetti	David & Susan Mocella	25.00
Dominic Corsetti	Michael & Agnese Meehan	100.00
Dominic Corsetti	Francis & Carole O'Rourke	15.00
Wilfred "Willie" Simard	PDG Fred Pais	50.00
Wilfred "Willie" Simard	Katherine Harrell	35.00
Wilfred "Willie" Simard	PDG Connie Mahoney	25.00
Ruth McDonald	James Silva	40.00
Frank C. Criscitello	Allan & Marcia Stephens	25.00
Ronald V. Bazza	PDG Fred Pais	20.00
Theresa Gatley	Gail F. Burke	10.00
Theresa Gatley	Irene & Joe Simas	20.00
Theresa Gatley	James & Margret Landry	10.00
Theresa Gatley	Claire Murphy	10.00
Patricia McCorry	Peter & Louise Wojtkiewicz	10.00
Kimberly Ann Hamilton	Laura Kelly	50.00
Fred Murphy	Frank Dimauro DMD	50.00
Carl Sittler	PCC David & Audrey Rose	25.00
Daniel Joyce	Francis & Carole O'Rourke	15.00
Koy "Gunney" Felker	PID John & Liz Pettis	25.00
Anna Grasso	Lilla & James Brown	50.00
Anna Grasso	M/M Peter Sicilaino	100.00
Anna Grasso	Grace Cavallo	25.00
Anna Grasso	"The Card Girls"	50.00
Anna Grasso	Celeste & John DeMarco	50.00
Anna Grasso	Amil & Denise Salemi	25.00
Anna Grasso	Dale & Leslie Parechian	10.00
Anna Grasso	Ann M. Duffy	35.00
Anna Grasso	Bear Hill Golf Club	25.00
Anna Grasso	Linda A. Vitale	100.00
Anna Grasso	Frances Camarro	25.00
Anna Grasso	Lillian Ippolito	25.00
Anna Grasso	James & Elixabeth Capomaccio	25.00
Diane Walkowicz	Polish Amer. Vets Ladies Aux	85.00
Diane Walkowicz	Marlene Tumbarello	20.00



# MLERF FINANCIALS - MEMORIALS

IN MEMORY OF	CONTRIBUTOR	AMOUNT
Irene Myrabo Kucinski	PID John & Liz Pettis	25.00
Kenneth Paradis	PID John & Liz Pettis	25.00
Bob Dever	Bob & Myrtle Peary	10.00
Hilda Gibbons	Bob & Myrtle Peary	10.00
Elaine Swartz	James Silva	20.00
Nicholas J. Tierno	Madeline Morris	50.00
Nicholas J. Tierno	Particia L. Cavlier	100.00
Nicholas J. Tierno	M/M Carmen Fama	10.00
Nicholas J. Tierno	Vincent & Karen Piro	50.00
Nicholas J. Tierno	The Perenick Family	100.00
Nicholas J. Tierno	James T. McNeil	25.00
Nicholas J. Tierno	Cynthia C. Naylor	25.00
Nicholas J. Tierno	M/M William Fincke	25.00
Nicholas J. Tierno	Mobile Gas Clients	100.00
Nicholas J. Tierno	Scott Dias	100.00
Nicholas J. Tierno	Linda M. Johnson	5.00
Nicholas J. Tierno	Lucille Cesari	50.00
Nicholas J. Tierno	George O'Brien	50.00
Nicholas J. Tierno	Neal & Maureen Snebold	250.00
Nicholas J. Tierno	Ken & Cheryl King	50.00
Nicholas J. Tierno	Frank Challant	25.00
Nicholas J. Tierno	Irene & Francis Carroll	25.00
Nicholas J. Tierno	James & Alice Scanlan	25.00
Nicholas J. Tierno	M/M Alfred Meuse	25.00
Nicholas J. Tierno	Dianne & David French	50.00
Nicholas J. Tierno	Clark & Judith Kerry	35.00
Nicholas J. Tierno	Robert & Marta Frank	100.00
Nicholas J. Tierno	Bill Thornton & Kathy Portman	50.00
Nicholas J. Tierno	Mary Brown & Arthur Waugh	50.00
Helen M. Souza	Doris Hall	10.00
N. Kennard Walker	Susan & Brian Wiseman	50.00
Patricia Kohanski	James Silva	20.00
Marie Bourdon	PDG Fred Pais	20.00
PDG Donald Locke, PP mlerf	Donna M. Kavjian	50.00
PDG Donald Locke, PP mlerf	Gail Strand	100.00
PDG Donald Locke, PP mlerf	Kathryn T. Kinder	100.00
PDG Donald Locke, PP mlerf	Betty Graig Cotton	100.00
PDG Donald Locke, PP mlerf	Ann M. Barassi	20.00
PDG Donald Locke, PP mlerf	June E. Doliber	25.00
PDG Donald Locke, PP mlerf	Susan E. McGonagle	25.00
PDG Donald Locke, PP mlerf	Lesli Gordon	50.00
PDG Donald Locke, PP mlerf	Shelly Bickford Koch	50.00
PDG Donald Locke, PP mlerf	Rosalie Denise	50.00
PDG Donald Locke, PP mlerf	Carol Pine	50.00
PDG Donald Locke, PP mlerf	Barbara Zudeck	50.00
PDG Donald Locke, PP mlerf	Robin Leggett	25.00
PDG Donald Locke, PP mlerf	Judy Oshansky	25.00
PDG Donald Locke, PP mlerf	Pauline Rose	50.00
PDG Donald Locke, PP mlerf	Barbara Forte	50.00
PDG Donald Locke, PP mlerf	Maryella Blundo	25.00
PDG Donald Locke, PP mlerf	Rosanne McGoldrick	50.00
PDG Donald Locke, PP mlerf	Scott Nason	50.00
PDG Donald Locke, PP mlerf	Noel Fraser Dost	25.00
PDG Donald Locke, PP mlerf	Sharon Sabbagh	25.00
PDG Donald Locke, PP mlerf	Sarah James	25.00
PDG Donald Locke, PP mlerf	Maria Zacharakis	15.00

IN MEMORY OF	CONTRIBUTOR	AMOUNT
PDG Donald Locke, PP mlerf	Tim Hennigan	10.00
PDG Donald Locke, PP mlerf	Angela Tang	20.00
PDG Donald Locke, PP mlerf	PDG Fred & Mae Blake	25.00
PDG Donald Locke, PP mlerf	Joan St. John	100.00
PDG Donald Locke, PP mlerf	PDG Bill & Angela Murphy	25.00
PDG Donald Locke, PP mlerf	Sam & Jayne Ludwig	20.00
PDG Donald Locke, PP mlerf	PDG Fred Pais	20.00
PDG Donald Locke, PP mlerf	Al & Marion Galante	30.00
Solon A. Anezis	Jim Silva	25.00
Marie Hogan	Eugenie Pottier	10.00
Marie Hogan	Joyce Melkonias	25.00
Ken Burgess	Laurence Kelley	50.00
Bruce Davis	Loretta & Anthony O'Donnell	25.00
Bruce Davis	Cynthia A. Pinet	10.00
Bruce Davis	Betty & Peter Macisaac	50.00
Bruce Davis	Debby Choquette	50.00
Bruce Davis	Alden Hurd	10.00
Bruce Davis	PDG William Jones	25.00
Bruce Davis	Alan & Susan Piccole	50.00
Bruce Davis	Dorene & William Carne	50.00
Bruce Davis	Lynn Republican City Comm.	25.00
Bruce Davis	Betty Lopes	25.00
Joe Medlin	John & Sondra Lucente	25.00
Barbara Lore	Jim Silva & Lois White	40.00
Gilda Whalen	Jim Silva	25.00
Paul E. Haggerty	Irene & Joe Simas	25.00
Richard Rose, Sr.	Jim Silva & Lois White	40.00
John "Jack" Ryan	John Duran, Jr.	25.00
John "Jack" Ryan	Roger H. Styskal	50.00
John "Jack" Ryan	Thomas D. Pecora	25.00
John "Jack" Ryan	Karen & Steve Delisle	50.00
John "Jack" Ryan	Joan Catherine Lee	20.00
Lawrence "Butch" Fagan	Irene & Joe Simas	25.00
Lawrence "Butch" Fagan	Ellen M. Kauer	10.00
Marilyn Brillante	Dona Dean, Dale Sarno & Deb Cieslik	75.00
Alice Madruga	Jim Silva	20.00
Lion Walter J. Deputat. CM	Ken & Mary Smith	100.00
Lion Walter J. Deputat. CM	Ronald & Maureen Wilson	100.00
Lion Walter J. Deputat. CM	James E. Sullivan	100.00
Lion Walter J. Deputat. CM	Jack & Charlene Farley	50.00
Lion Walter J. Deputat. CM	Olasz & Barney Family	50.00
Lion Walter J. Deputat. CM	Howard C. Whitten	50.00
Lion Walter J. Deputat. CM	Richard & Barb Cucco	40.00
Lion Walter J. Deputat. CM	Francis McCusker, Jr.	35.00
Lion Walter J. Deputat. CM	Richard & Margaret Gath	25.00
Lion Walter J. Deputat. CM	William & Shelia Sartell	25.00
Lion Walter J. Deputat. CM	Allen & Marcia Stephens	25.00
Lion Walter J. Deputat. CM	Michael & Angela Callahan	25.00
Lion Walter J. Deputat. CM	Paul Morrison & Paula Riggi	20.00



# MLERF FINANCIALS - MEMORIALS

IN MEMORY OF	CONTRIBUTOR	AMOUNT
Lion Walter J. Deputat. CM	Wayne & Patricia Isabelle	20.00
Lion Walter J. Deputat. CM	Barbara Herlihy-Chevalier	20.00
Lion Walter J. Deputat. CM	Lowell Skilled Care Center	20.00
Aime Baptiste	DG Jodi & Randy Baptiste	100.00
Larry "Butch" Fagan	Margaret Landry	50.00
Larry "Butch" Fagan	Leanne Landry	50.00
Larry "Butch" Fagan	Claire Murphy	25.00
Marie Hogan	David & Jean O'Sullivan	15.00
Lion Norman E. Dee	Sherry Dee Mokley	100.00
Norton Goldstein	Marla & Tom Clough	100.00

TOTAL HONORARY & MEMORIAL DONATIONS 33-N \$11,313.00

## DISTRICT SPECIALS - DISTRICT 33-N

IN MEMORY OF	CONTRIBUTOR	AMOUNT
PDG Ted Irvin	MLERF Awards Banquet	610.00
Eye Research	Give With Liberty	489.64
Eye Research	Give With Liberty	738.83
Eye Research	Give With Liberty	1,224.98
Eye Research	Tupperware	75.60
Eye Research	Give With Liberty	662.94
Eye Research	Give With Liberty	337.91
Eye Research	Eileen Fisher, Inc.	130.00
Eye Research	Balance Club Account	261.49

Total Club/District Specials \$4,531.39

## CLUB HONORARY DONATIONS 33-N

IN HONOR OF	CONTRIBUTOR	AMOUNT
Dr. Robert G. Levy	Shoe City Lions	50.00
PDG Jane Fanjoy Wakefield	H&R Block Foundation	2,500.00
Neil Fanjoy Birthday	Wakefield Lions	200.00
Neil Fanjoy Birthday	Shoe City Lions	25.00
DG Joni Baptiste	Acton Lions	200.00
PDG Randy Pinch, MLERF	Shoe City Lions	1,000.00
Nicholas & Judy Tierno	Woburn Host Lions	305.00
Donna King	Woburn Middlesex Lions	25.00
DG Joan Baptiste	Amesbury Lions	1,000.00

## CLUB MEMORIALS DONATIONS 33-N

IN MEMORY OF	CONTRIBUTOR	AMOUNT
Robert Delong	Amesbury Lions	50.00

IN MEMORY OF	CONTRIBUTOR	AMOUNT
Vincent C. Topea	Woburn Middlesex Lions	25.00
Genevieve McKenney	Woburn Middlesex Lions	25.00
Richard Querze	Woburn Middlesex Lions	25.00
Walter W. Northam	North Andover Lions	50.00
Louise Morelli	Woburn Middlesex Lions	25.00
Frances Trenholm	Amesbury Lions	10.00
Bob Anderson	Amesbury Lions	50.00
Robert "Bob" White, Sr.	Woburn Middlesex Lions	25.00
Charles Priest	Tewksbury Lions	100.00
Ruth Perry	Tewksbury Lions	50.00
Harold Kiley	Woburn Host Lions	100.00
Harold Coakley	Shoe City Lions	20.00
Antonette "Toni" Cecilli	Wyoma Lions	150.00
Albert William Diotte, Jr.	Saugus Lions	100.00
Frances Treholm	Amesbury Lions	25.00
Robert Anderson	Amesbury Lions	240.00
Robert Killian	Ipswich Lions	100.00
Janet T. Dever	Woburn Middlesex Lions	100.00
David Cash	Wyoma Lions	25.00
Pete Tunnicliffe	Concord Lions	100.00
David Baker	Concord Lions	100.00
Mafalda Szczechowicz & Antonette Cecilli	Wyoma Lions	3,900.00
Herb Tibbetts	Amesbury Lions	50.00
Romeo Fournier	Amesbury Lions	50.00
Ronald V. Bazza	Billerica Lions	25.00
Theresa Getely	Woburn Middlesex Lions	25.00
Josie Frigault	Saugus Lions	100.00
Patricia McCorry	Shoe City Lions	45.00
Joseph Mondello	Shoe City Lions	50.00
Thomas L. Scammon	Acton Lions	100.00
Hays & Carol Penfield	Concord Lions	100.00
Kenny Roland	Concord Lions	100.00
Dominic Corsetti	Woburn Breakfast Lions	100.00
Elizabeth Puleo	Wyoma Lions	100.00
Frank Criscitello	Tewksbury Lions	100.00
Carl Sitter	Tewksbury Lions	100.00
Norman Dee	Concord Lions	1,000.00
Edward Kawa	Dracut Lions	25.00
Kenneth McAnespie	Lowell Lions	50.00
Jean Jones	Shoe City Lions	25.00
Jeanne Elia	Woburn Host Lions	50.00
Anna Grasso	Shoe City Lions	270.00
Robert O. McGurl	Acton Lions	250.00
Austin Griffin	Saugus Lions	100.00
Mary Ann Kennedy	Acton Lions	100.00
Robert E. LaFleur	Townsend Lions	50.00
Salvatore "Sal" Ciaccio	Tewksbury Lions	100.00
Arthur O'Hara	Concord Lions	100.00
Marie Bourdan	Billerica Lions	25.00
Margaret A. Perri	Haverhill Lions	25.00
Francis Perry	Haverhill Lions	50.00
Annette Hichey	Haverhill Lions	25.00
Belina Murphy	Woburn Breakfast Lions	25.00
Paul E. Haggerty	Woburn Breakfast Lions	25.00
Thomas Leo Hughes	Acton Lions	250.00



# MLERF FINANCIALS - MEMORIALS

IN MEMORY OF	CONTRIBUTOR	AMOUNT
Edward J. Gillis	Wyoma Lions	50.00
Michael V. Favale	Saugus Lions	100.00
James E. Meehan	Woburn Middlesex Lions	25.00
Harold Magee	Woburn Middlesex Lions	25.00
Bruce Davis	Shoe City Lions	50.00
Bob Macero	Saugus Lions	2,393.00
Lawrence "Butch" Fagan	Woburn Middlesex Lions	25.00
Guido Gagliano	Acton Lions	250.00
Lion Walter J. Deputat, CM	Tewksbury Lions	100.00
PID Joseph Camarda	Woburn Middlesex Lions	75.00
PID Joseph Camarda	Woburn Host Lions	75.00

TOTAL CLUB HONORARY & MEMORIAL DONATIONS \$17,458.00

## MEMORIAL DONATIONS - DISTRICT 33-K

IN MEMORY OF	CONTRIBUTOR	AMOUNT
Kathleen E. O'Keaffe	Bob & Mary Braman	50.00
Audrey Johnson	Bob & Mary Braman	50.00
PDG Richard Dunn	Florence & John MacGilvray	25.00
Jack McHugh	Richard Hagerty	25.00
Jack McHugh	Frederick Demarco	50.00
Jack McHugh	Edward A. Ciampa	20.00
Jack McHugh	Anne Driscoll	25.00
Jack McHugh	Thomas Mulvoy, Jr.	50.00
Jack McHugh	Brewster Gifford	50.00
Jack McHugh	Wellesley Eileen Fisher Team	130.00
Norman MacDonald	Joyce Klejbuk	50.00
Norman MacDonald	C. Lorraine Egan	25.00
Norman MacDonald	Carol Dolitka	10.00
Norman MacDonald	Gail Hyman	10.00
Norman MacDonald	Rosaline Finkelstein	20.00
Norman MacDonald	Dawn Newman	100.00
Norman MacDonald	Marilyn Bartlett	50.00
Norman MacDonald	Medway Oil co.	100.00
Frederick Murphy, Jr.	Mail Handlers Local 301	25.00
Frederick Murphy, Jr.	Rita Leicht	25.00
Frederick Murphy, Jr.	J&B Metal Products	100.00
Antonette Ciampa	Edward A. Ciampa	25.00
Mary E. Wamboldt	M/M Marco Glemma	50.00
Della Dow	Patricia Kalicki	25.00
Murray Kusmin	Patricia Kalicki	25.00
Mary Jacquelin Clements	Dr. & Mrs Sy Shribnik	25.00
PDG Al Bridges	PDG Connie Mahoney	25.00
Kenneth Walker	Bob Harris	50.00
Kenneth Walker	David C. Valeri	100.00
Kenneth Walker	Keith Bowden	50.00
Merrill "Tinker" Bunker	Patricia Kalicki	25.00
Patricia Winske	Patricia Kalicki	25.00
Lion Edward Ciampa	Patricia Kalicke	25.00
Lion Edward Ciampa	Gino & Lois Angelone	25.00
Lion Edward Ciampa	PDG Wayne Smith	50.00

IN MEMORY OF	CONTRIBUTOR	AMOUNT
Lion Edward Ciampa	Paula Barry	10.00
Lion Edward Ciampa	Theresa Feloney	25.00
Lion Edward Ciampa	Shelia & Francis Ciampa	100.00
Lion Edward Ciampa	Richard Dernier	25.00
Lion Edward Ciampa	Judith Rita	25.00
Lion Edward Ciampa	Carol McGrath	25.00
Lion Edward Ciampa	M/M Thomas Perry	20.00
Lion Edward Ciampa	Phyllis Bragg/Carol & Lucille	25.00
Lion Edward Ciampa	PDG Bill & Angela Murphy	25.00
Lion Edward Ciampa	Thomas J. Gosnell	100.00
Lion D. Paul Leitch	Jim & Thurza Campbell	100.00
Lion D. Paul Leitch	Robert & Marilyn Marlette	50.00
Lion D. Paul Leitch	Peter & Evelyn Liffiton	100.00
Lion D. Paul Leitch	David & Patricia Bolduc	40.00
Lion D. Paul Leitch	Joyh & Patricia Mulhall	100.00
Margaret "Peggy" Cahill	Sy Shribnik	25.00

TOTAL HONORARY & MEMORIAL DONATIONS 33-K \$2,310.00

## CLUB HONORARY DONATIONS 33-K

IN HONOR OF	CONTRIBUTOR	AMOUNT
Dr. Charles Balson	Belmont Lions	25.00
Glenn Clancy	Belmont Lions	25.00
Della Dow	Medway Lions	50.00

IN MEMORY OF	CONTRIBUTOR	AMOUNT
Mary Louise Afienko	Concord Lions	100.00
Norman MacDonald	Medfield Lions	100.00
Joe Cannistraco	Medway Lions	1,000.00
Lion Jack McHugh	Sharon Lions	1,000.00
Clifford "Denny" Osmer	Medfield Lions	50.00
Walter Lyon	Westwood Lions	50.00
Jeanne Williams	Greater Ashland Lions	1,500.00
Leo Lavoie	Ashland Lions	150.00
Leo Lavoie	Hopington Lions	895.00
Gerald B. Drew	Ashland Lions	100.00
Merrill Bunker	Medway Lions	50.00
Jack Peterson	Medfield Lions	100.00
Lion D. Paul Leitch	Sherborn Lions	100.00
Frederick Simpson	Westwood Lions	50.00
Lion Jack McFeeley, PP	Norfolk Lions	1,000.00
Lion Edward A. Ciampa	Ashland Lions	150.00
Lion Edward A. Ciampa	Somerville Lions	1,830.00

TOTAL CLUB HONORARY & MEMORIAL DONATIONS \$8,325.00



# MLERF FINANCIALS - MEMORIALS

## HONORARY DONATIONS - DISTRICT 33-S

IN HONOR OF	CONTRIBUTOR	AMOUNT
Bill Copeland 80th Birthday	Barbara A. Simmons	25.00
PDG Dick & Betty Ferrucci	PID L. Doug Sime & Vale	50.00
Richard Millhouser 85th Birthday	Shele Levine	10.00
Mirian & Sam Horwitz. 70th Anniv	Shele Levine	10.00
M. Vale Sime	Anne Lantz	50.00
Bruce Wood 80th Birthday	Bob & Mary Braman	50.00
Tosh Linton Birthday	David Horan	25.00
Antone M. DaCosta Birthday	David Horan	25.00

## MEMORIAL DONATIONS - DISTRICT 33-S

IN MEMORY OF	CONTRIBUTOR	AMOUNT
PDG Donald Leedham	PDG Wayne P. Smith	50.00
PDG Donald Leedham	Kennrth Benoit	25.00
PDG Donald Leedham	Karen Benoit	25.00
PDG Donald Leedham	PID L. Doug Sime & Vale	25.00
PDG Donald Leedham	Don Lemonde	50.00
PDG Donald Leedham	PDG Bert & Muriel Patenaude	25.00
PDG Donald Leedham	Monkou Restaurant	100.00
PDG Donald Leedham	PDG Fred & Mae Blake	25.00
PDG Donald Leedham	Gail & Mike Zayka	50.00
PDG Donald Leedham	Lion Annette M. Sirois	20.00
PDG Donald Leedham	Richard Boyajian	100.00
PDG Donald Leedham	PDG Don Correia	20.00
PDG Donald Leedham	PDG Ray Hebert	50.00
PDG Donald Leedham	PDG Bill & Angela Murphy	25.00
PDG Donald Leedham	PDG Connie Mahoney	25.00
Lion Gerald Hajder, PP	Brian & Margaret Riley	25.00
Lion Gerald Hajder, PP	Dick & Judy St Pierre	50.00
Lion Gerald Hajder, PP	Swansea Fire Dept Ladies Co. 1	25.00
Lion Gerald Hajder, PP	Joseph Joaquin	100.00
Lion Gerald Hajder, PP	Janice R. Partridge	25.00
Lion Gerald Hajder, PP	Cynthia Michaud	10.00
Lion Gerald Hajder, PP	Carol A. Martin	25.00
Lion Gerald Hajder, PP	Renette & Edward Gendreau	25.00
Lion Gerald Hajder, PP	Richard & Cecile Heroux	25.00
Lion Gerald Hajder, PP	Connie & Tony Furtado	25.00
Lion Gerald Hajder, PP	Mark & Elaine Guillemette	50.00
Lion Gerald Hajder, PP	Donna Perry	25.00
Lion Gerald Hajder, PP	David & Helen Albarnaz	20.00
Lion Gerald Hajder, PP	Lisa Grillo	25.00
Lion Gerald Hajder, PP	Barry & Deborah Bibeau	75.00
Lion Gerald Hajder, PP	Robert Lapointe	50.00
Lion Gerald Hajder, PP	PDG Bill & Angela Murphy	25.00
Lion Gerald Hajder, PP	Joyce A. Moore	25.00
Lion Gerald Hajder, PP	Eileen Pelletier	50.00

IN MEMORY OF	CONTRIBUTOR	AMOUNT
Georgine Silva	Mary Anne Ezyk	75.00
Lion Robert Silvia	Arnie Lett	15.00
Paul A. Burke	PDG Bert & Muriel Patenaude	20.00
Adeline B. Levine	Diane M. Sears	25.00
Ann Orecchio	District 33S	52.00
Edward B. Doherty	Arnie Lett	10.00
Alvin Faunce	Antone M. DaCosta	20.00
Ruth McCount	Marjorie Puccia	35.00
Dorothy Taurasi	Shele Levine	20.00
"Snoopy"	Shele Levine	10.00
Prathina Nelli's Mother	Shele Levine	10.00
Lion Lillian Murphy	Antone M. DaCosta	20.00
Oscar A. Vadenais	PDG Bert & Muriel Patenaude	15.00
Paul Schlub	Sharon Audette	25.00
Paul Schlub	Ellen Delany	50.00
Paul Schlub	Russ & Helene DeCosta	50.00
Marilyn Drape	PDG Bill & Angela Murphy	100.00
John Radvilas	Shele Levine	10.00
Joanne Hamblett	Shele Levine	10.00
Cecile Robitaille	PDG David & June White	25.00
Cecile Robitaille	Robert St Pierre	20.00
Cecile Robitaille	Annette Lawrence	30.00
Cecile Robitaille	Michael & Susan Murray	25.00
James D. Sears	Diane M. Sears	25.00
Mary Wynn	Antone M. DaCosta	20.00
Mary Wynn	PDG Bill & Angela Murphy	20.00
Mary Sullivan	John Tyler	5.00
Rene A. Gadbois	Paul & Robin Meunier	50.00
Rene A. Gadbois	Gaetane Mahon	25.00
Rene A. Gadbois	Yvonne M. Sylvia	25.00
Rene A. Gadbois	John D. Merritt	50.00
Rene A. Gadbois	Susan J. Perry	50.00
Rene A. Gadbois	Margaret Atwood	50.00
Rene A. Gadbois	Julie Ouellette	100.00
Rene A. Gadbois	Michele Mullin	75.00
Rene A. Gadbois	Claudia Jacobsen	25.00
Rene A. Gadbois	PDG David & June White	25.00
Rene A. Gadbois	Gail Conceicao	25.00
Rene A. Gadbois	Donna Haworth	25.00
Rene A. Gadbois	Mary Ann St Pierre	20.00
Rene A. Gadbois	Annette Landreville	25.00
Rene A. Gadbois	Pauline Bastille	25.00
Rene A. Gadbois	Gloria Arruda	30.00
Rene A. Gadbois	PDG Bill & Angela Murphy	25.00
Rene A. Gadbois	Francis Motyl	100.00
Rene A. Gadbois	Friends at the Funeral	35.00
Rene A. Gadbois	Frank & Pauline Ruscik	40.00
Rene A. Gadbois	Leola Gadbois	50.00
PDG Bill & Angela Murphy		250.00
PCST Al & Tosh Linton		50.00
Ralph & Donna Brown		100.00





# MLERF FINANCIALS - MEMORIALS

IN MEMORY OF	CONTRIBUTOR	AMOUNT
PDG David R. White, PP	mierf	
	PDG Carl Munroe & PCST Cindy	100.00
	PCST J. Armand Dupont	50.00
	Antone M. DaCosta	50.00
	Sean & Denise Murphy	100.00
	Black Tie Cookies Nicole & Maria	100.00
	M/M Edward Cambra	20.00
	Calvin & Wynne Tripp	100.00
	Bernadette DeRoche	20.00
	M/M Edward Govoni	50.00
	Michael Cote	25.00
	Jeff & Donna Macomber	100.00
	Rosev Dairu Foods, Inc.	100.00
	D. W. White Construction	200.00
	William Q. MacLean	100.00
	Acushnet Firefighters Assoc	50.00
	Anne Cwalinski	25.00
	PDG Bert & Muriel Patenaude	30.00
	PDG Warren Emerson	50.00
	Randy & Roe Domingos	25.00
	Alice Bourgeois	50.00
	PID L. Doug Sime & Vale	50.00
	PDG Glenn & Carol Croteau	25.00
	Debross Hathaway Marvel Oil	100.00
	Sea Fuels Marine Services	100.00
	Linda C. Brodeur	100.00
	Dan & Daneen Eilectsen	100.00
	PDG Wayne P. Smith	100.00
	Nancy & John Arcuri	100.00
	Alzira Castelo	75.00
	Manuel Goncalves	75.00
	Fred Scott	25.00
	Doreen Souza	100.00
	Joyce & Mark White	100.00
	Judy Scannell	25.00
	Howard Gold	18.00
	Christopher & Tracey Buzniak	50.00
	Virginia Dawson	50.00
	Board Of Directors MLERF	250.00
	Peter Duff	100.00
	M/M Raymond St Pierre	50.00
	M/M Roger Champdelaine	25.00
	PDG Richard Pierce	50.00
	PDG Connie Mahoney	25.00
	James Nuttall	100.00
	PDG Fred & Mae Blake	25.00
	Beverly Pierce Judy Scannell	25.00
	Cynthia (Levine) Shele Levine	10.00
Jesse A. Sivlia, Jr.	PDG Bert & Muriel Patenaude	20.00
PCST Thomas Scannell	PDG Richard Pierce	50.00
PCST Thomas Scannell	PDG Bill & Angela Murphy	50.00
PCST Thomas Scannell	June White	25.00
PCST Thomas Scannell	Antone M. DaCosta	20.00
PCST Thomas Scannell	Peter & Janice Johnson	50.00
PCST Thomas Scannell	PDG Fred & Mae Blake	25.00

IN MEMORY OF	CONTRIBUTOR	AMOUNT
PCST Thomas Scannell	PDG Wayne P. Smith	50.00
M. David Levine	Diane Sears	25.00
Elizabeth Regis	Marie Anderson, Richard Reale & Catherine Archambault	50.00
Marion Lacalli	Shele Levine	10.00
Carol Indyck	Paul Chouinard	25.00
Ugo Paparo	Shele Levine	10.00
Lion Donald W. White, CM	Betty E. White	1,000.00
Lion Donald W. White, CM	Bay State Blasting, Inc.	100.00
Lion Donald W. White, CM	William Q. MacLean	200.00
Lion Donald W. White, CM	Lorraine E. Vaughan	50.00
Lion Donald W. White, CM	Southeastern Ins. – Bradford Lowe	200.00
Lion Donald W. White, CM	Howard Tinkham	30.00
Lion Donald W. White, CM	Alzira Castelo	75.00
Lion Donald W. White, CM	Diane Stelfax Cook	50.00
Lion Donald W. White, CM	Clare Camara	20.00
Lion Donald W. White, CM	M/M Howard Tinkham	30.00
Lion Donald W. White, CM	Scituate Concrete Pipe Corp	200.00
Lion Donald W. White, CM	June Clay	50.00
Lion Donald W. White, CM	Francis Will	100.00
Lion Donald W. White, CM	Catherine White & Family	100.00
Lion Donald W. White, CM	Linda Brodeur	100.00
Lion Donald W. White, CM	June White	35.00
Lion Donald W. White, CM	PDG Bill & Angela Murphy	25.00
Lion Donald W. White, CM	Kirkland, Albrecht and Fredrickson LLC	250.00
Lion Donald W. White, CM	Edward Cambra	25.00
Lion Robert D. Jordan	Steven Garran, CPA	250.00
Lion Robert D. Jordan	Jack & Carol Clayton	25.00
Lion Robert D. Jordan	Wedward Walker	25.00
Lion Robert D. Jordan	M/M John J. Mooney	100.00
Lion Robert D. Jordan	Roanld & Peg Lewis	50.00
Lion Robert D. Jordan	Wayne & Virginia Miller	100.00
Lion Robert D. Jordan	Dennis O'Connell	50.00
Lion Robert D. Jordan	Gayle M. Adams	25.00
Lion Robert D. Jordan	John & Darlene Smith	25.00
Lion Robert D. Jordan	M/M Bob Hutwelker	50.00
Lion Robert D. Jordan	Sandra Wonders	50.00
Lion Robert D. Jordan	Freshbrook Lane Assoc.	50.00
Lion Robert D. Jordan	Irvin Freimuth	25.00
Lion Robert D. Jordan	Joanne & Michael Sullivan	100.00
Lion Robert D. Jordan	Dennis O'Connell	50.00
Lion Robert D. Jordan	Rudyard Longton	25.00
Lion Robert D. Jordan	Robert Faye	25.00
Lion Robert D. Jordan	Larry & Robin Higgins	25.00
Arthur D. Gebelein, Jr.	Antone M. DaCosta	20.00
PDG Henry Chiminiello	M/M Fredrick Blake	25.00
PDG Henry Chiminiello	PDG Wayne Smith	50.00
Gary F. LeMoire	David M. Hart	25.00
Kenneth Riley	PDG Bill & Angela Murphy	100.00



# MLERF FINANCIALS - MEMORIALS

IN MEMORY OF	CONTRIBUTOR	AMOUNT
Lion Alfred Townley III	Antone M. DaCosta	20.00
Lion Alfred Townley III	PDG Bill & Angela Murphy	25.00
Judge John A. Tierney	PDG Bill & Angela Murphy	100.00
PDG William Richardson	PDG Wayne P. Smith	50.00
PDG William Richardson	Antone M. DaCosta	20.00
Adeline B. Levine	Diane M. Sears	25.00

TOTAL HONORARY & MEMORIAL  
DONATIONS 33-S 11,315.00

## CLUB HONORARY DONATIONS 33-S

IN HONOR OF	CONTRIBUTOR	AMOUNT
Fairhaven Lions 70th Anniv.	Acushnet Lions	500.00
DG Beverly Dillon	South Attleboro Lions	100.00
PDG Bill Murphy	Somerset Lions	500.00

## CLUB MEMORIALS DONATIONS 33-S

IN MEMORY OF	CONTRIBUTOR	AMOUNT
Georgine Silva	Rehoboth Anawan Lions	50.00
Lion Gerald Hajder, PP	Somerset Lions	20.00
John M. Costa	Dighton Lions	25.00
PDG Donald Leedham	Fairhaven Lions	25.00
PDG Donald Leedham	South Attleboro Lions	1,000.00
Ernest B. Montrond	Middleboro Lions	50.00
Sarah Jigerjian	Middleboro Lions	50.00
Barbara Fernandes	Middleboro Lions	50.00
Douglas Westgate	Middleboro Lions	50.00
Donald Moran	Mattapoissett Lions	50.00
Barry Rose	Mattapoissett Lions	50.00
Anthony J. Dupont	Mattapoissett Lions	50.00
Lion Bob Silva	Provincetown Lions	1,000.00
Emilia Rosario	Dighton Lions	50.00
Michael McCarthy	Rehoboth Anawan Lions	50.00
Karen Lynn Shaker	Bridgewater Academy Lions	25.00
	Lakeville Lions	100.00
	Fairhaven Lions	50.00
	Freetown Lions	100.00
	Acushnet Lions	1,000.00
Al Fontaine	Lakeville Lions	25.00
Marian Mann	Lakeville Lions	50.00
Len Butler	Halifax Lions	525.00
Lion Bart Jim Jean	Barnstable Yarmouth Lions	50.00
Michael DePalma, Jr.	Barnstable Yarmouth Lions	50.00
Jesse A. Silvia, Jr.	Fall River Carousel Lions	25.00
PDG Harle Kingsford	South Attleboro Lions	100.00

IN MEMORY OF	CONTRIBUTOR	AMOUNT
Annette Duclas	South Attleboro Lions	50.00
Marcia Barbara Kartsen	Rehoboth Anawan Lions	50.00
Lion Donald W. White, CM	Acushnet Lions	250.00
Rene Gadbois	Acushnet Lions	100.00
John Keough	Dighton Lions	25.00
Cheryl Navin	Westport Lions	50.00
Lion Robert Jordan	Provincetown Lions	1,000.00
Dorothy "Dot" Morrissey	Norton Community Lions	50.00
June Jones	Dighton Lions	50.00
Alice L. McCarroll	East Bridgewater Lions	25.00
Joe Vandini	Plymouth Lions	1,050.00
Lion Alfred Townley	Dighton Lions	25.00
Tony Barba	Barnstable Yarmouth Lions	50.00
Ken Riley	Somerset Lions	50.00
Jonathan Frazier	Rehoboth Anawan Lions	50.00

TOTAL CLUB HONORARY & MEMORIAL  
DONATIONS \$8,645.00



# MLERF FINANCIALS - CLUB DONATIONS

Massachusetts Lions Eye Research Fund, Inc.

## DISTRICT "Y"

July 1, 2014--> June 30, 2015

Club Name	Previous Year	Penny \$	J/S	Club	TOTAL
Adams	2,700		100	2,600	2,700.00
AIC (Amer Int'	300		40	64	103.98
Agawam	20,835	2,240	10	9,475	11,724.61
Agawam Lions	1,500	28		1,200	1,228.00
Amherst	184		15		15.00
Amherst Leo	100			100	100.00
Ashfield	500			500	500.00
Belchertown	4,533			4,400	4,400.00
Charlemont	372				0.00
Cheshire	2,000	160		2,100	2,259.52
Cummington	2,980				0.00
Dalton	4,000			2,500	2,500.00
Deerfield	350	108	150	350	608.00
East Longmead	5,369	1,543		4,234	5,777.68
Easthampton	2,273	100		1,900	2,000.00
Easthampton L	0				0.00
Granby	1,901		50		50.00
Granville Tolla	200			400	400.00
Great Barrington	500			500	500.00
Greenfield	0				0.00
Hadley	500	100	100	400	600.00
Hampden	5,117		100	3,000	3,100.00
Hatfield	1,000			2,000	2,000.00
Hinsdale	1,000	32	105	1,000	1,136.65
Holyoke	66				0.00
Hoosac Valley	100			100	100.00
Huntington	2,519	86	377	2,000	2,462.50

Club Name	Previous Year	Penny \$	J/S	Club	TOTAL
Lee	950	1,047	120	800	1,967.17
Ludlow	0			500	500.00
Montague Erving	500			500	500.00
North Adams	0				0.00
Northampton	6,500	851	73	7,640	8,564.56
Pelham	100			100	100.00
Pittsfield	1,000	1,198	50	871	2,119.11
South Hadley	366	66	150	200	416.00
South Hadley Leos	50				0.00
Southampton	0		185	2,000	2,185.00
Southwick	3,086	481	325	3,280	4,086.00
Springfield 16 Acres	1,951	1,353	521	1,089	2,962.60
Stockbridge	0				0.00
UMass Campus	0				0.00
West Springfield	12,000		50	15,000	15,050.00
Whately	0				0.00
Wilbraham	783				0.00
Williamsburg	350		45	300	345.00
DISTRICT PROJECTS:					
50/50 Raffle Mid-W	265				0.00
Dining 50/50 Raffle	0			152	152.00
Mid Winter Pictures	0			125	125.00
DG Todd Cromack	120				0.00
Pennies Misc	66				0.00
Dinning for Dollars				402	402.25
4 <sup>th</sup> Advisory Raffle				254	253.87

### Trust & Endowment

<b>TOTAL T&amp;E --&gt;</b>	<b>\$0.00</b>

### Totals

	Prev. Year	Penny \$	J/S	Club	Total Donations
District Donations	\$88,985.49	xxxx	xxxx	xxxx	83,994.50
District Specials	\$0.00	xxxx	xxxx	xxxx	0.00
District Memorials	\$1,494.06	xxxx	xxxx	xxxx	4,785.00
<b>TOTAL--&gt;</b>	<b>\$90,479.55</b>	<b>9,393</b>	<b>2,566</b>	<b>72,036</b>	<b>88,779.50</b>



# MLERF FINANCIALS - CLUB DONATIONS

## Massachusetts Lions Eye Research Fund, Inc.

### DISTRICT "A"

July 1, 2014----> June 30, 2015

Club Name	Previous Year	Penny \$	J/S	Club	TOTAL
Ashburnham	1,250		229	1,000	1,229.00
Athol	578		150	645	795.00
Auburn	215		50	100	150.00
Barre	0	33		75	108.00
Berlin	0	427			427.18
Blackstone Val	986		125		125.00
Bolton	0	1,698		1,300	2,997.60
Boylston	3,000			1,500	1,500.00
Brookfields	4,689		500	4,175	4,675.00
Charlton	1,284	361		300	661.46
Clinton	1,033				0.00
Dudley	825	405	25	500	930.00
Dudley Leo	0				0.00
Fitchburg Com	1,908	671	175	1,000	1,846.15
Gardner	1,307		150	750	900.00
Gardner Leo	49				0.00
Grafton	2,848		150	5,000	5,150.00
Grafton Leo	0				0.00
Harvard	4,000			4,000	4,000.00
Holden	100			100	100.00
Hopedale	1,559		200		200.00
Hubbardston	511	125			125.00
Leicester	1,132		60	2,000	2,060.00
Leicester Leo	0				0.00
Leominster	382	134	150	200	484.00
Lunenburg Tur	66	72		250	321.85
Mendon	69,571	104	2,110	7,950	10,164.00
Milford	15,000		335	15,000	15,335.00
Millbury	14,036		1,550	20,478	22,027.70
Monson	0				0.00
Montachusett R	700				0.00
Northboro	2,932		77	2,500	2,577.00
Orange	0	20	50		70.00
Oxford	1,400		50	400	450.00

Club Name	Previous Year	Penny \$	J/S	Club	TOTAL
Palmer	1,453	156	65	1,150	1,371.21
Paxton	500			102	102.00
Petersham	1,404	14		1,215	1,229.00
Phillipston	75		45	50	95.00
Rutland	1,968	107	1,464	95	1,666.00
Shrewsbury	0		200	7,500	7,700.00
Southbridge	500		375		375.00
Spencer	894			1,000	1,000.00
Sterling	0				0.00
Sturbridge	1,824		350	1,050	1,400.00
Sutton	2,000		145	1,000	1,145.00
Templeton	600	25		500	525.00
Uxbridge	264		100	330	430.00
Wachusett Area	0				0.00
Ware	0				0.00
Ware Leo	0				0.00
Webster	1,093	25	50	1,000	1,075.00
West Boylston	0				0.00
West Brookfiel	650	33			33.00
Westborough	0				0.00
Westminster	1,125			2,100	2,100.00
Winchendon	1,099	311	25	1,000	1,336.00
Worcester Cty	500	500			500.00
Worcester Host	500				0.00
DISTRICT PROJECTS:					
Ride For Sight	1,751		1000		1,000.00
District 33A M	1,000				0.00
Pennies – Misc	100			38	38.00
Pennies – 2VP	40				0.00
					0.00

### Trust & Endowment

<b>TOTAL T&amp;E --&gt;</b>				\$0.00

### Totals

	Prev. Year	Penny \$	J/S	Club	Total Donations
District Dona	150,703				102,529.15
District Spec	3,658	xxxx	xxxx	xxxx	0.00
District Mem	190	xxxx	xxxx	xxxx	4,265.00
<b>TOTAL---&gt;</b>	154,551	5,221	9,955	87,353	106,794.15



# MLERF FINANCIALS - CLUB DONATIONS

## Massachusetts Lions Eye Research Fund, Inc.

DISTRICT "N"						DISTRICT "N"					
July 1, 2014----> June 30, 2015						July 1, 2014----> June 30, 2015					
Club Name	Previous Year	Penny \$	J/S	Club	TOTAL	Club Name	Previous Year	Penny \$	J/S	Club	TOTAL
Acton	20,649	1,066	200	21,150	22,416.37	Nahant	110	1,023	681	2,000	3,704.00
Amesbury	4,749	356	805	6,675	7,836.29	Newburyport	36,580	66	38,535		38,601.00
Ayer Shirley	558		250	650	900.00	North Andover	1,463	33	340	2,050	2,423.00
Beverly	785	278	50	500	828.35	Peabody	1,970	198	170	3,000	3,368.00
Billerica	5,765	1,053	2,605	2,550	6,207.80	Pepperell	7,913	855	325	7,500	8,679.50
Billerica Leo	215		200		200.00	Reading	12,110		105	10,500	10,605.00
Burlington	0			4,038	4,038.11	Reading Mem	500				0.00
Chelmsford	2,700	100	100	2,500	2,700.00	Salem	645	99	80	759	937.53
Concord	11,100	132	185	12,100	12,417.00	Salisbury	2,134		100		100.00
Danvers	333	53	125	250	428.00	Saugus	11,690		100	9,093	9,193.00
Dracut	4,202		55	2,525	2,580.00	Saugus Leo	0				0.00
Dracut Leo	600			500	500.00	Shoe City	3,025	900	511	5,654	7,065.00
DunstableTyng	1,648		50		50.00	Swampscott	275		40	400	440.00
Essex	0			100	100.00	Tewksbury	5,585		650	5,600	6,250.00
Groton	0		570		570.00	Townsend	1,550		50	1,550	1,600.00
Haverhill	2,013	66	295	1,700	2,061.00	UMass Lowell	50				0.00
Ipswich	5,233	528	395	4,100	5,023.00	Wakefield	2,000	1,171	955	3,175	5,301.00
Lawrence	100		100		100.00	Wilmington	100			210	210.08
Lawrence Latin	0		210	500	710.00	Woburn Break	15,875		400	11,800	12,200.00
Lexington	28,500	66	19,085	2,000	21,151.00	Woburn Host	16,116	1,872	125	13,053	15,050.49
Lowell	3,708	283	600	1,550	2,433.00	Woburn Middle	17,486	932	470	10,425	11,827.34
Lynn	13,300			5,000	5,000.00	Woburn Leo	500	22		1,000	1,022.45
Lynnfield	5,000			3,000	3,000.00	Wyoma	5,403	2,820	2,138	6,075	11,032.32
Magnolia	500			500	500.00						
Melrose	3,275			1,500	1,500.00	DISTRICT PROJECTS:					0.00
Merrimac	1,800	7	60	1,100	1,167.25	Walk-A-Thon	761		872		872.00
Methuen	2,322	66	593	500	1,159.00	District 33N	33				0.00
Middleton	183	132		100	232.00	Cruise For A Cause				1,535	1,535.00
						Mid-Winter Raffle				350	350.00
						33N Honor "Essex Lions"				500	500.00

### Trust & Endowment

<b>Total T&amp; --&gt;</b>	\$0.00

### Totals

	Prev. Year	Penny \$	J/S	Club	Total Donations
District Done	263,113	xxxx	xxxx	xxxx	258,674.88
District Spec	230	xxxx	xxxx	xxxx	4,531.39
District Men	6,871	xxxx	xxxx	xxxx	11,313.00
<b>TOTAL--&gt;</b>	<b>270,214</b>	<b>14,178</b>	<b>73,180</b>	<b>171,317</b>	<b>274,519.27</b>



# MLERF FINANCIALS -CLUB DONATIONS

## Massachusetts Lions Eye Research Fund, Inc.

### DISTRICT "K"

July 1, 2014 ---> June 30, 2015

Club Name	Previous Year	Penny \$	J/S	Club	TOTAL	Club Name	Previous Year	Penny \$	J/S	Club	TOTAL
Arlington	366	33			33.00	King Philip Leos				200	200.00
Ashland	23,810	944	550	25,400	26,893.80	Malden	0				0.00
Ashland Leo	0				0.00	Marlboro	1,682		90	1,700	1,790.00
Bellingham	2,000			1,000	1,000.00	Medfield	5,715	33	100	5,250	5,383.00
Belmont	23,500	500	100	24,050	24,650.00	Medford	0				0.00
Blackstone	105		30	1,000	1,030.00	Medway	10,195	320	35	8,536	8,890.50
Boston Chinato	742	347	105	1,500	1,952.10	Millis	8,836	66	40	6,500	6,606.00
Boston Host	757	105	155	567	826.86	NE College of C	0				0.00
BU Eye Assoc	871	265			265.00	Newton	3,115	23		4,100	4,123.15
Cambridge	1,000			200	200.00	Norfolk	4,784		450	2,359	2,809.48
Canton	2,566			3,000	3,000.00	Norwood	233		13	200	213.00
Charlestown	0			200	200.00	Plainville	3,616	38	200	2,000	2,237.85
Everett	0				0.00	Plainville Leo	0				0.00
Foxboro	1,200		150	1,000	1,150.00	Quincy	4,412			5,412	5,412.00
Framingham	7,832	1,198	50	7,625	8,873.00	Randolph	6,083	1,013	100	4,000	5,112.84
Franklin	0				0.00	Sharon	1,800	113		2,000	2,113.14
Greater Ashlan	3,440	126	130	2,250	2,506.00	Sherborn	1,000			2,100	2,100.00
Greater Boston	0				0.00	Somerville	0			1,830	1,830.00
Himalayan NE	0				0.00	Stoughton	1,066			1,000	1,000.00
Hingham	750			500	500.00	Stow	4,066		5	5,000	5,005.00
Holliston	6,572	99	730	9,400	10,229.00	Walpole	2,000	155		2,000	2,155.20
Holliston Leo				200	200.00	Waltham	21,000			22,000	22,000.00
Hopkinton	600			895	895.00	Westwood	1,500		200	4,800	5,000.00
Hull	1,283			1,500	1,500.00	Weymouth	3,803	1,650	75	2,500	4,224.61
Hyde Park	66	147		725	871.83	Wrentham	4,783		250	3,750	4,000.00
						DISTRICT PROJECTS:					
						Pennies - Misc	99			100	166.00
						District K				650	650.00

### Trust & Endowment

Lion Robert Doucette - Belmont Lions Club (PDG James Roth)	1,000.00
<b>TOTAL T&amp;E --&gt;</b>	<b>\$1,000.00</b>

### Totals

	Prev. Year	Penny \$	J/S	Club	Total Donations
District Dona	167,247	xxxx	xxxx	xxxx	179,797.36
District Spec	0	xxxx	xxxx	xxxx	0.00
District Mem	3,811	xxxx	xxxx	xxxx	2,310.00
<b>TOTAL---&gt;</b>	<b>171,058</b>	<b>7,174</b>	<b>3,558</b>	<b>168,999</b>	<b>182,107.36</b>



# MLERF FINANCIALS - CLUB DONATIONS

## Massachusetts Lions Eye Research Fund, Inc.

### DISTRICT "S"

July 1, 2014 ---> June 30, 2015

Club Name	Previous Year	Penny \$	J/S	Club	TOTAL
Abington	11,033	1,369	522	10,570	12,461.35
Acushnet	30,200	265	1,734	22,001	24,000.00
Attleboro	5,000				0.00
Attleboro Tri B	2,401	86		388	474.14
Barnstable Yarm	1,172		598	1,150	1,748.00
Barnstable High	0				0.00
Berkley	2,400				0.00
Bridgewater	8,971	358	680	7,180	8,218.27
Bridgewater Ac	12,780	1,890	210	522	2,621.90
Bridgewater Co	1,403	335	360	404	1,099.57
Bridge/Raynham	0				0.00
Brockton	1,537		50	1,000	1,050.00
Chatham Nause	9,600	331	30	7,000	7,361.00
Dartmouth	8,146	1,045	2,442	1,025	4,512.17
Dennis Harwic	4,784	392	1,680	3,100	5,172.07
Dennis Yarmou	0		175		175.00
Dighton	13,868	845	760	6,415	8,020.14
Dighton Rebob	337				0.00
Duxbury	119	100	85	449	634.00
East Bridgewat	3,558	124	90	4,225	4,439.00
Easton	29,267	1,700	830	38,800	41,330.00
Easton Oliver A	0		140		140.00
Fairhaven	2,640	99	95	3,075	3,269.00
Fall River Inc.	100		115	2,000	2,115.00
Fall River Caro	6,381		5	5,921	5,926.00
Falmouth	1,099	566	275	650	1,491.00
Freetown	1,012	100		100	200.00
Greater Attlebo	100			73	73.00
Greater Taunto	0				0.00
Halifax	796	164	50	525	739.00
Hanover	5,000		130	5,000	5,130.00
Kingston	2,000		175	1,500	1,675.00
Lakeville	4,150	845	100	3,396	4,340.80
Lakevill OCA	1,595		75	1,400	1,475.00
Lower Cape Co	183	66	50		116.00
Mansfield	25				0.00

#### Trust & Endowment

<b>TOTAL T&amp;E --&gt;</b>					0.00

Club Name	Previous Year	Penny \$	J/S	Club	TOTAL
Mattapoisett	11,796	1,324	515	8,900	10,739.00
Middleboro	2,905	911	144	900	1,954.30
Nauset NRMS	0				0.00
New Bedford H	4,187	33	50	3,639	3,722.00
North River Co	1,317		210	500	710.00
Norton	2,675	33		1,850	1,883.00
Norton Commu	1,000			450	450.00
Plymouth	13,125	1,780	965	15,655	18,400.47
Provincetown	21,590		360	23,000	23,360.00
Raynham	15,780	1,189	820	3,400	5,409.00
Raynham King	715				0.00
Rehoboth	9,468		5,189	3,563	8,752.00
Rehoboth Anav	9,660		45	10,661	10,706.14
Rochester	5,315	83	493	1,979	2,555.41
Rochester Leo	0				0.00
Rockland	4,580	947	2,000	1,622	4,569.44
Sandwich Bour	925	1,009	2,670	6,500	10,179.00
Seekonk	15,669		88	13,000	13,088.00
Seekonk Hearts	458				0.00
Somerset	8,746	1,076	150	5,934	7,159.80
South Attleboro	8,141	3,211	1,533	5,410	10,154.26
South Attleboro	7,491	740	785	8,475	10,000.00
South Carver	2,382	50	822	375	1,247.00
Taunton	115	25	10	126	161.00
UMass Dartmo	0				0.00
West Bridgewa	3,400	115	521	5,100	5,735.80
Westport	4,320	300	340	2,050	2,690.00
<b>DISTRICT PROJECTS:</b>					
Walk-A-Thon N	476		569		569.00
Misc	50				0.00
District 33-S				182	181.54

#### Totals

	Prev. Year	Penny \$	J/S	Club	Total Donations
District Dona	327,940	xxxx	xxxx	xxxx	304,382.57
District Spec	69	xxxx	xxxx	xxxx	0.00
District Mem	6,915	xxxx	xxxx	xxxx	11,315.00
<b>TOTAL----&gt;</b>	334,924	23,508	29,734	251,140	315,697.57



# CLUB PICTURES



Hank Herbowy from the Stoughton Lions Club cooking up a tasty breakfast for their Annual Pancake Breakfast on Sunday, October 18th. The club's been holding this event for many years and the town loves to support them.



Needham President, Joan Story accepting a MLERF award for donation of \$5,000 in 2014-2015. Presenting the award is Zone Chair Peg Needre.



Millis President, Debbie Hayes, presents MLERF President, Martin Middleton with a check for \$3,000.

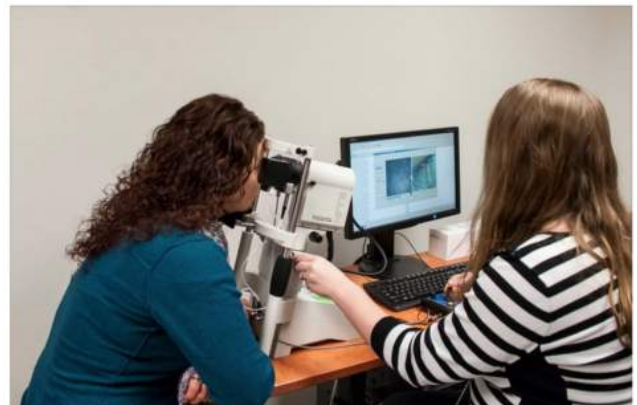
# SOCIAL MEDIA CLIPS

For 10 years MLERFI has been funding Dr. Michael Young's work on regeneration of the retina. One of his main projects is using retinal stem cells to try to replace lost photoreceptors in the degenerating retina. Dr. Young's research has now entered the clinical trial stage at Massachusetts Eye and Eye Infirmary. If the clinical trials are successful, the doctors will be able to grow photoreceptors (rods and cones) in the damaged retina. The result: restoring vision for those who have lost it.



The New England Eye Center sees nearly 10,000 patients diagnosed with corneal disease every year. It can take anywhere from a few days to a few weeks to diagnose and begin treatment for corneal infections. The standard diagnostic procedure involves taking a biopsy of corneal tissue. Then waiting for the results from a pathologist. What if you could get the results instantly, without the need for a tissue sample?

Thanks to a MLERFI Presidential grant awarded to Tufts Medical Center, that dream is now a reality. Tufts purchased a Confocal Scanning Microscope. The microscope allows doctors to perform diagnoses accurately without the need for a biopsy. Certain pathogens can be identified on the day of infection!







# The Pennies for Pins Bowling Challenge is Back!!!

At: Ryan's Amusements Bowling Lanes, 1170 Main St, Millis, MA – Saturday, April 2, 2016

**ALL PROCEEDS TO BENEFIT THE MASSACHUSETTS LIONS EYE RESEARCH FUND**

Lions Clubs in District K and other Districts will create teams of Lion Members for a fun evening of friendly rivalry between the districts. All monies raised by your club will be donated in your Club's name to **Massachusetts Lions Eye Research Fund**. There will be prizes, raffles and lots of fun!

For questions, please contact the event coordinator: PDG Pat Kalicki, [pak331@aol.com](mailto:pak331@aol.com).

## **BOWLING INFORMATION**

There will be 5 bowlers per team. Each bowler will bowl three strings of bowling. A (\$15.00) entrance fee per bowler, covers shoes and three strings. (If you cannot make a team of 5, we will assign bowlers to complete your team.) Bowlers are asked to get sponsors to donate.

Register your club team (\$15.00 per bowler) with:

**PDG Pat Kalicki, 4 Thayer Rd, Medway, MA 02053**

No later than March 20th.

When: Saturday, April 2, 2016

Time: 6 pm – 9 pm

Where: Ryan's Amusements Bowling Center, 1170 Main St (Rte 109), Millis, MA 02053



Wine and Beer are available for purchase. Feel free to bring your own snacks too!

There will be Prizes, Raffles and Light refreshments!

## **"The Pennies for Pins" Bowling Challenge Sponsor Sheet**

The Pennies for Pins Bowling Challenge is Back! District K is challenging other Districts to see who can get the most sponsorships and donations for **Mass Lions Eye Research**. This year all pledge sheets (or a copy of the same) will be turned in to:

**PDG Pat Kalicki 4 Thayer Rd Medway, MA 02053.**

**Checks should be payable to "MLERF"- memo "Pennies for Pins". ALL DONATIONS WILL BE MADE IN THE NAME OF THE CLUB WHO GOT THE DONATION.** An event summary will be sent to each and every club participating, so that you may know how much was donated. THANK YOU for supporting the Massachusetts Lions "Pennies for Sight" Campaign.

Bowler's Name: \_\_\_\_\_ Bowler's Club: \_\_\_\_\_

Sponsor's Name	Address	Phone	Per Pin Pledge	Total Pledge	Total
1					
2					
3					
4					
5					
6					
7					
8					
9					
10					
11					
12					

Total \$ collected \_\_\_\_\_

### “The Pennies for Pins” Bowling Challenge Sponsor Sheet

The Pennies for Pins Bowling Challenge is Back! District K is challenging other Districts to see who can get the most sponsorships and donations for **Mass Lions Eye Research**. This year all pledge sheets (or a copy of the same) will be turned in to: **PDG Pat Kalicki 4 Thayer Rd Medway, MA 02053**. Checks should be payable to “MLERF”- memo “Pennies for Pins”

We will be submitting an accounting to MLERF for the event. ALL DONATIONS WILL BE MADE IN THE NAME OF THE CLUB WHO GOT THE DONATION. An event summary will be sent to each and every club participating, so that you may know how much was donated. THANK YOU for supporting the Massachusetts Lions “Pennies for Sight” Campaign.

Sponsor's Name: \_\_\_\_\_ Bowler's Club: \_\_\_\_\_

Sponsor's Name	Address	Phone	Per Pin Pledge	Total Pledge	Total
1					
2					
3					
4					
5					
6					
7					
8					
9					
10					
11					
12					

Total \$ collected \_\_\_\_\_



# LIGHT YEAR OF PENNIES CHALLENGE

At MLERFi, our unofficial motto is: "Lighting the Way to Cure Blindness."



Our goal is to spread the light of MLERFi out into the Universe. Every penny that is collected will represent one "light-second." A light-second is defined as the distance that light travels in free space in one second.  
**We want to collect a light-year of pennies.**

The MLERFi challenge to every Lion is to collect one light-hour of pennies, or \$36.00.

Clubs that donate \$100 in pennies will earn a Pennies For Sight Banner Patch and if you have already earned a patch you will receive a Penny Rocker for your banner.

Those clubs that collect a light-day of pennies (\$864.00) will also receive a special "Light-Year Of Pennies" banner patch. If your club has 24 members and each member collects \$36.00 in pennies, your club will meet this challenge.



Those clubs that collect a light-week of pennies (\$6048.00) will also receive a special "Light-Year Of Pennies" award.

Please convert all pennies to CHECKS\* and send to:  
PDG James Roth, 43 Stewart Terrace, Belmont, MA 02478.

\*Checks should be made out to MLERF with your club name and the words "Pennies for Sight" in the memo line.

Remember: "Your change changes people lives"



# THE EYE CATCHER

NON PROFIT  
ORGANIZATION  
U.S. POSTAGE



PAID  
HANOVER, MA  
PERMIT NO.

*To:*

**Visit our web site:  
[www.mlerfi.org](http://www.mlerfi.org)**

THE EYE CATCHER  
IS PUBLISHED BY THE  
MASSACHUSETTS LIONS EYE RESEARCH FUND, INC.

PCST MARTIN MIDDLETON, 33-S, PRESIDENT  
PDG NED MERRICK, 33-K, EDITOR  
RC DEBBIE HAYES, 33-K, LAYOUT

ADDRESS ANY EDITORIAL COMMENTS TO:  
PDG NED MERRICK E-MAIL: [N.MERRICK@COMCAST.NET](mailto:N.MERRICK@COMCAST.NET)

ADDRESS ALL OTHER CORRESPONDENCE TO:  
c/o Dr. James Roth PDG, Treasurer  
43 Stewart Terrace, Belmont, MA 02478